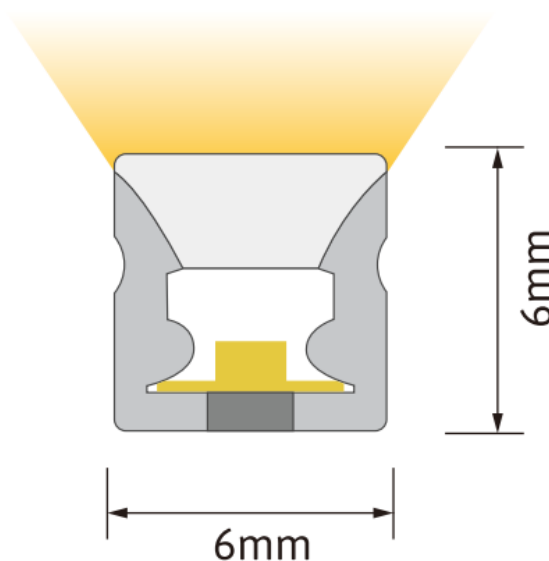


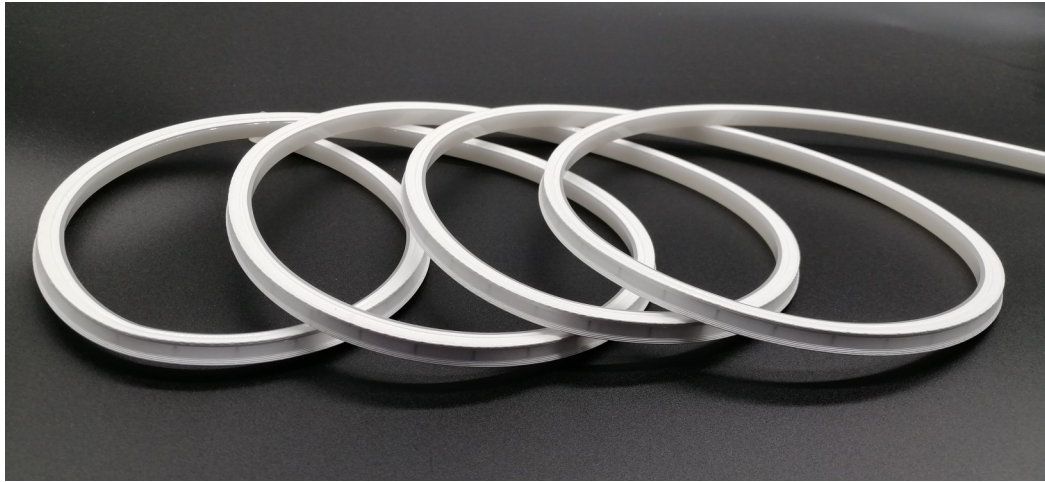
# HELIFLEX



## 6x6mm | Top Bend | Single colour

IP67 | -20 to 45deg C | Dot free illumination | Silicon extrusion moulding  
| High UV and salt water resistance | High impact resistance | CRI90

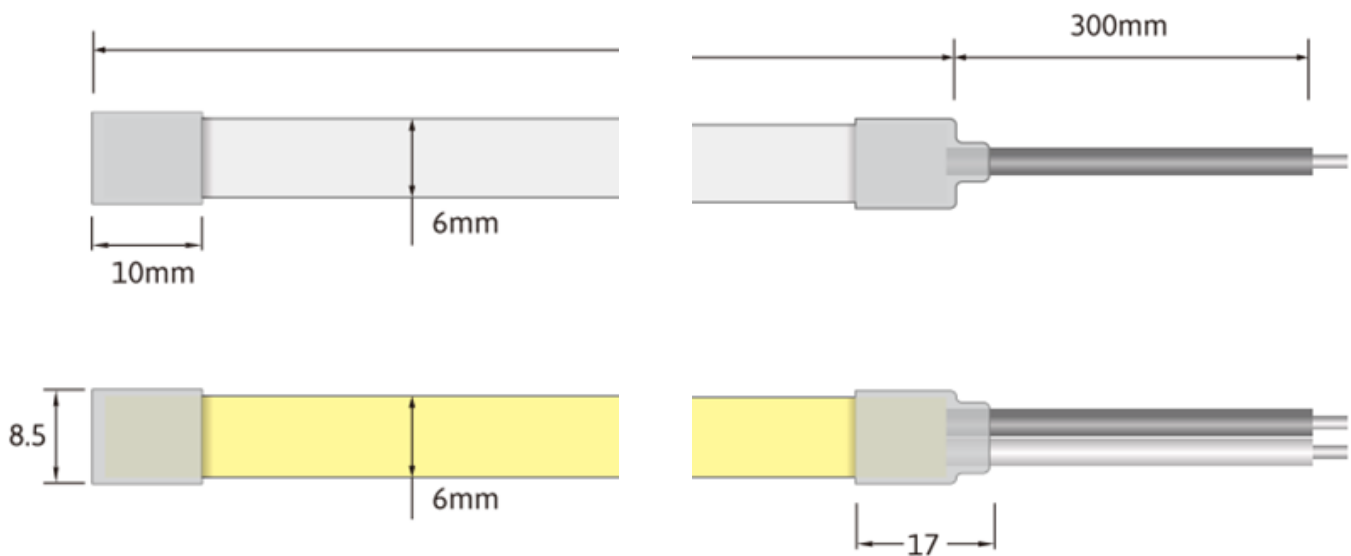


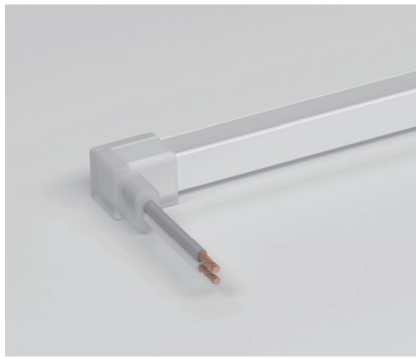


## 6w per metre

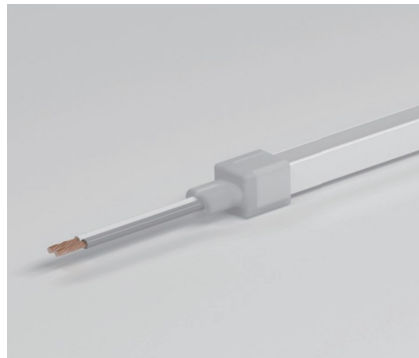
Max length up to 5m powered one end or 10m powered each end

CODE	V	W	COLOUR	CUT (mm)	Lm/m	MAX
HFP0606TB.5.27K	24	6	2700k	50	345	10m
HFP0606TB.5.3K	24	6	3000k	50	348	10m
HFP0606TB.5.4K	24	6	4000k	50	358	10m
HFP0606TB.5.6K	24	6	6000k	50	379	10m

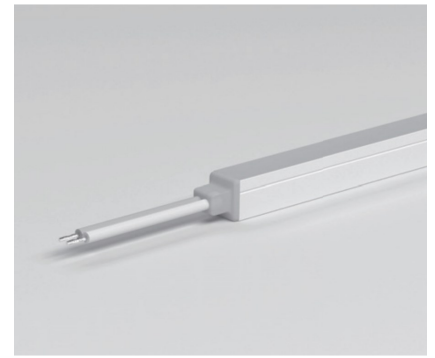




HFP0606TB-PCS  
Power cord side



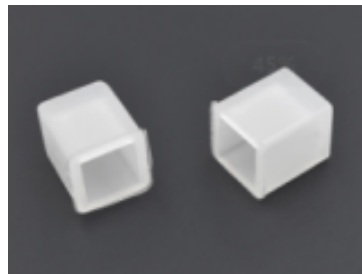
HFP0606TB-PCE  
Power cord end



HFP0606TB-PSM  
Power cord seamless



HFP0606TB-MCU  
Fixing clip



HFP0606TB-MC1M  
Fixing channel

