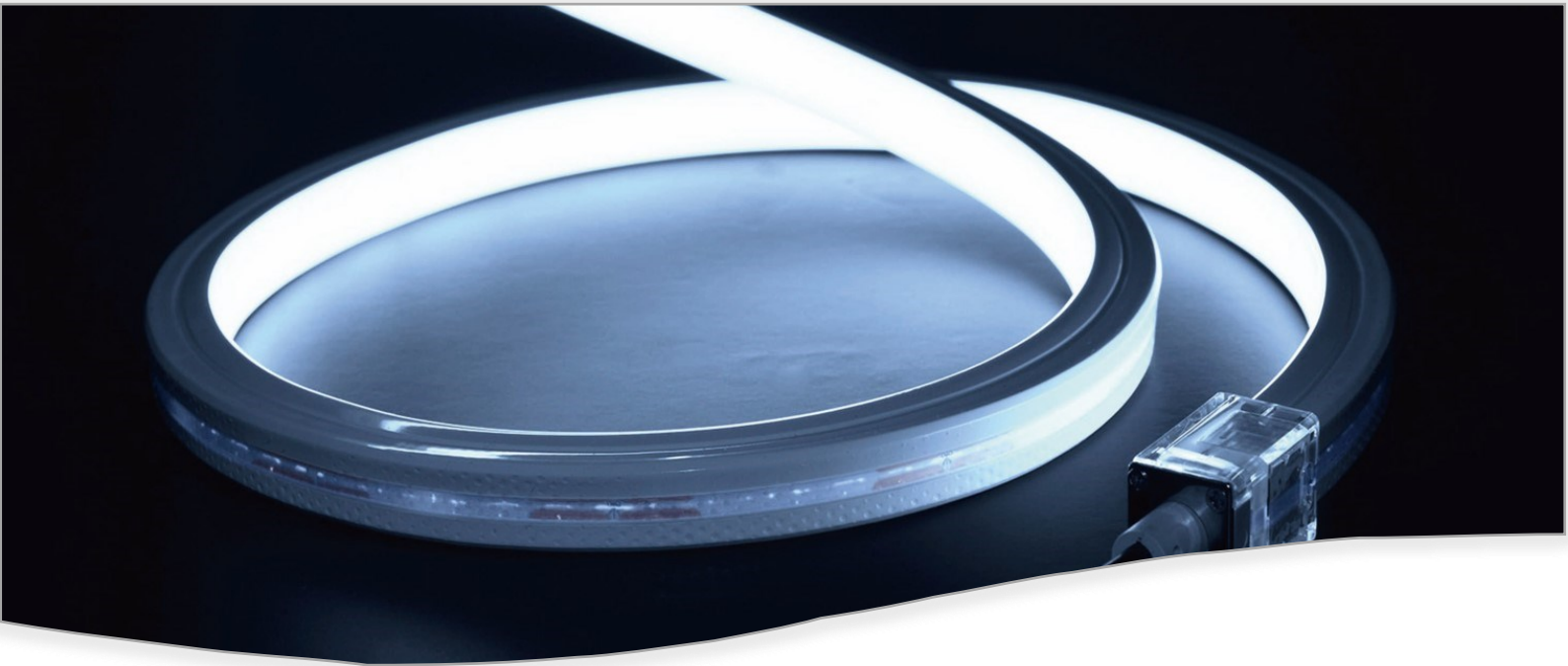


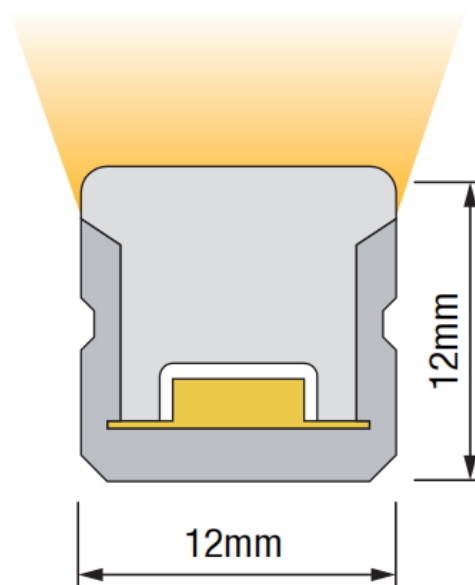
HELIFLEX

PREMIUM



12x12mm | Top Bend | Single colour | RGBW

IP67 | -20 to 45deg C | Dot free illumination | Silicon extrusion moulding
| High UV and salt water resistance | High impact resistance | CRI90



**SINGLE COLOUR
WHITE**



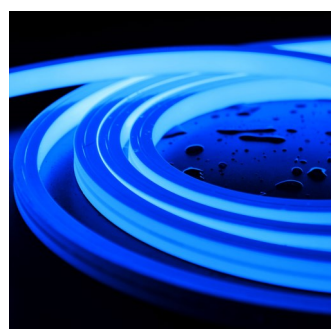
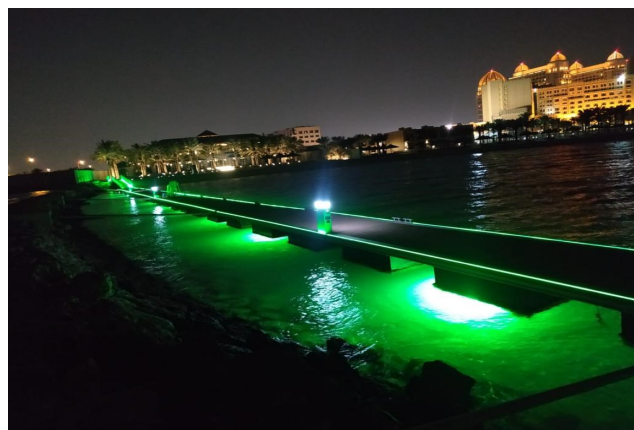
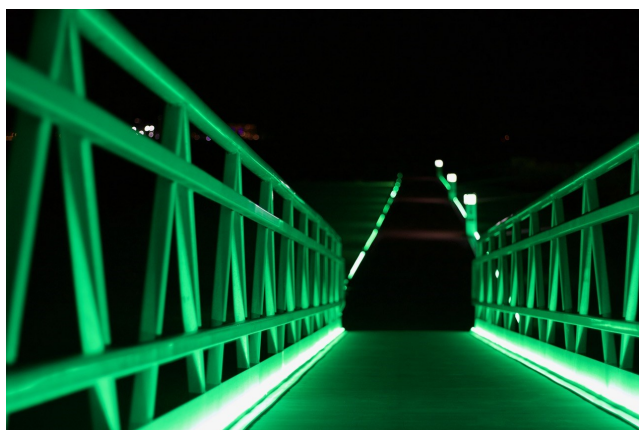
5w per metre (up to 19m powered one end)

CODE	V	W	COLOUR	CUT (mm)	Lm/m	MAX
HFP1212TB.5.27K	24	5	2700k	50	350	19m
HFP1212TB.5.3K	24	5	3000k	50	330	19m
HFP1212TB.5.4K	24	5	4000k	50	348	19m
HFP1212TB.5.6K	24	5	6000k	50	337	19m

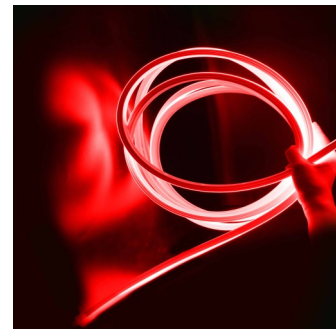
10w per metre (up to 13m powered one end)

CODE	V	W	COLOUR	CUT (mm)	Lm/m	MAX
HFP1212TB.10.27K	24	10	2700k	50	669	25m
HFP1212TB.10.3K	24	10	3000k	50	639	25m
HFP1212TB.10.4K	24	10	4000k	50	678	25m
HFP1212TB.10.60K	24	10	6000k	50	662	25m





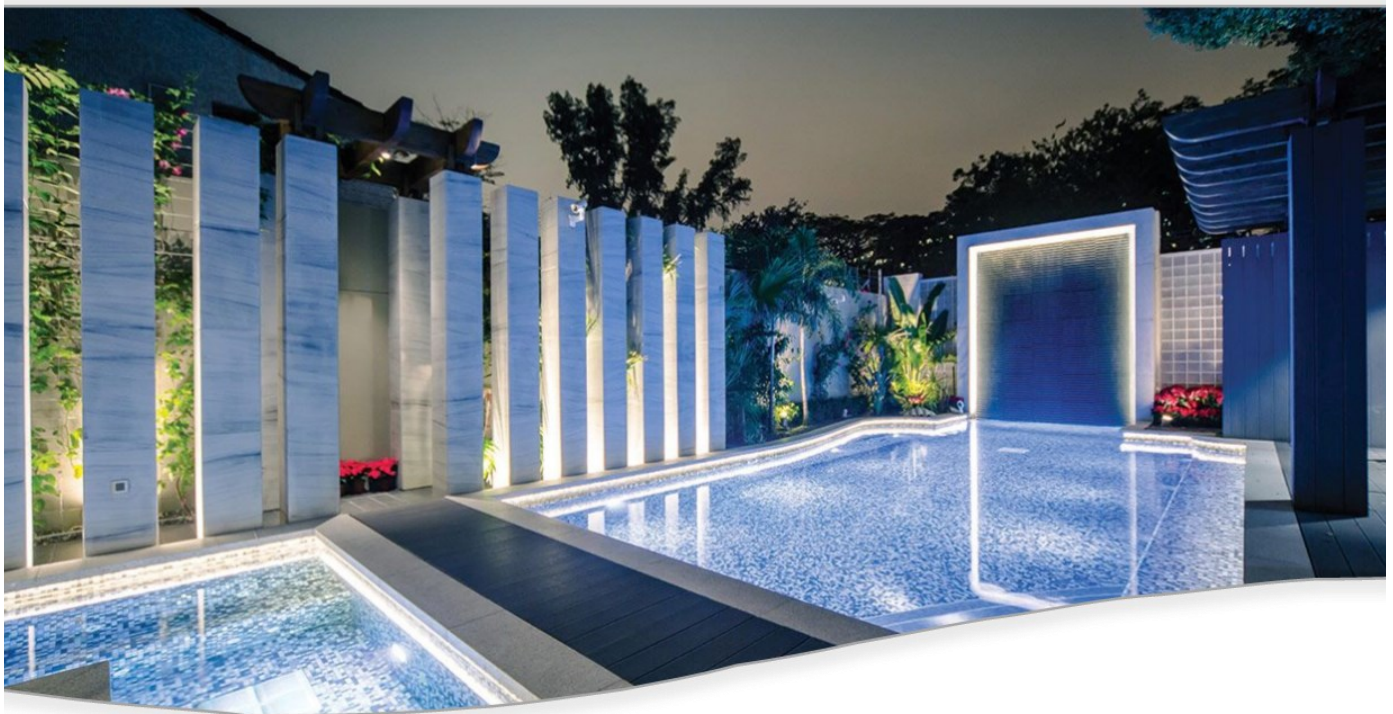
SINGLE COLOUR
BLUE | GREEN | RED
YELLOW | PINK



CODE	V	W	COLOUR	CUT (mm)	Lm/m	MAX
HFP1212TB.5.BL	24	5	BLUE	50	70	19m
HFP1212TB.5.GR	24	5	GREEN	50	374	19m
HFP1212TB.5.RD	24	5	RED	50	154	25m
HFP1212TB.5.YL	24	5	YELLOW	50	28	25m
HFP1212TB.5.PK	24	5	PINK	50	143	19m

CODE	V	W	COLOUR	CUT (mm)	Lm/m	MAX
HFP1212TB.BL	24	10	BLUE	50	129	13m
HFP1212TB.GR	24	10	GREEN	50	703	13m
HFP1212TB.RD	24	10	RED	50	277	17m
HFP1212TB.YL	24	10	YELLOW	50	51	17m
HFP1212TB.PK	24	10	PINK	50	278	13





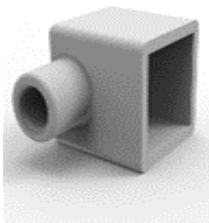
HFP1212TB.PCS
Power cord side



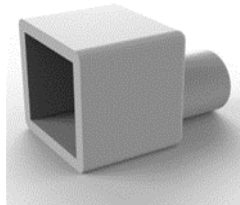
HFP1212TB.PCE
Power cord end



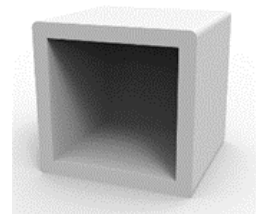
HFP1212TB.PCEC
End cap closed



HFP1212TB.MCU
Fixing clip



HFCON
Connectors male/ female



HFP 1212TB.MCH
Fixing channel

