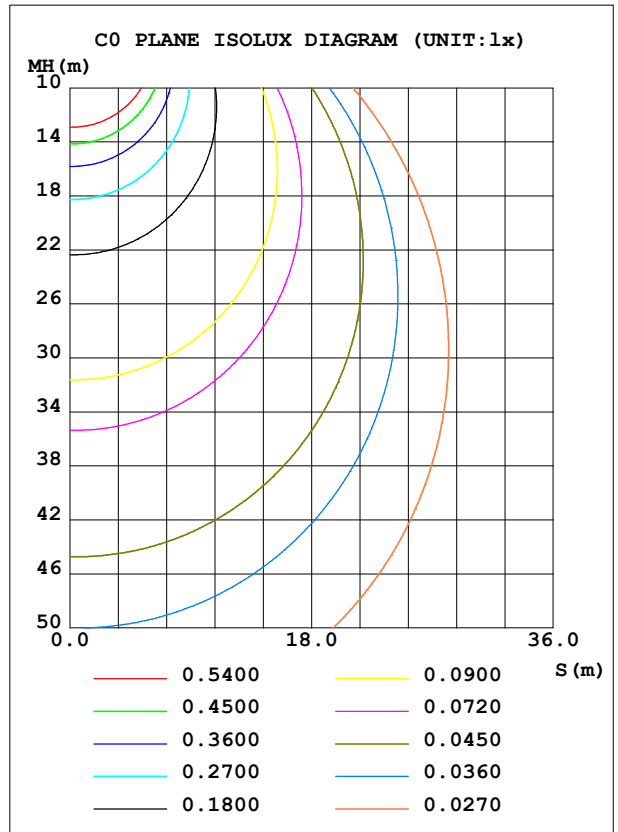
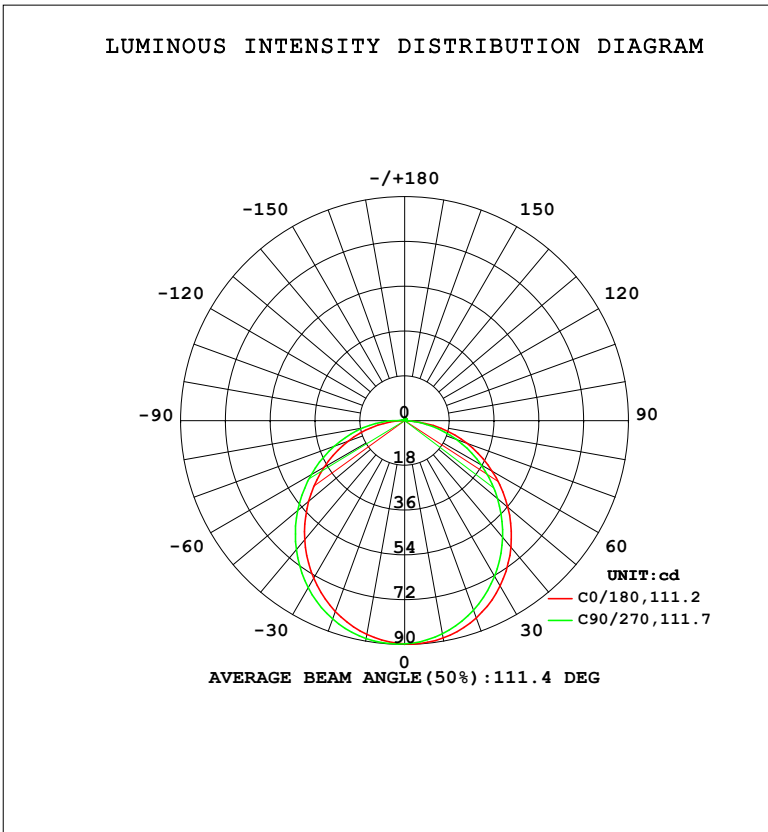


**LUMINAIRE PHOTOMETRIC TEST REPORT**

NAME: HFP1220SB.10.3K	TYPE:	WEIGHT:
SPEC.:	DIM.:	SERIAL No.:
MFR.:HELIFLEX	SUR.: 0.012*1	Shielding Angle:

DATA OF LAMP		PHOTOMETRIC DATA				Eff: 26.25 lm/W
MODEL	3000K RA90	I <sub>max</sub> (cd)	89.85	S/MH (C0/180)	1.22	
NOMINAL POWER (W)	10	LOR (%)	100.0	S/MH (C90/270)	1.28	
RATED VOLTAGE (V)	24	TOTAL FLUX (lm)	262.77	η UP, DN (C0-180)	0.8, 46.9	
NOMINAL FLUX (lm)	262.769	CIE CLASS	DIRECT	η UP, DN (C180-360)	0.9, 51.5	
LAMPS INSIDE	1	η up (%)	1.6	CIBSE SHR NOM	1.25	
TEST VOLTAGE (V)	24	η down (%)	98.4	CIBSE SHR MAX	1.35	



C Range: 0 - 360DEG  
 C Interval: 22.5DEG  
 Test Speed: HIGH  
 Temperature: 25.3DEG  
 Operators:  
 Test Date: 2023-04-25

γ Range: 0 - 180DEG  
 γ Interval: 2.0DEG  
 Test System: EVERFINE GO-2000B\_V1 SYSTEM V2.00.450  
 Humidity: 65.0%  
 Test Distance: 5.749m [K=1.0000]  
 Remarks:

ZONAL FLUX DIAGRAM

ZONAL FLUX DIAGRAM:

$\gamma$	C0	C45	C90	C135	C180	C225	C270	C315	$\gamma$	$\Phi$ zone	$\Phi$ total	%lum,lamp
10	88.74	87.66	87.04	87.02	87.26	88.35	88.97	89.01	0- 10	8.482	8.482	3.23,3.23
20	84.32	82.25	81.03	81.10	81.59	83.66	84.78	84.90	10- 20	24.23	32.71	12.4,12.4
30	76.74	73.85	72.26	72.39	73.14	76.03	77.55	77.64	20- 30	36.53	69.24	26.4,26.4
40	66.45	62.97	61.26	61.52	62.50	66.01	67.78	67.71	30- 40	43.78	113.0	43,43
50	54.17	50.39	48.78	49.20	50.37	54.27	56.12	55.78	40- 50	45.22	158.2	60.2,60.2
60	40.67	36.87	35.53	36.16	37.38	41.52	43.32	42.59	50- 60	41.02	199.3	75.8,75.8
70	26.63	23.03	22.11	22.97	24.20	28.45	30.12	28.91	60- 70	32.13	231.4	88.1,88.1
80	11.80	9.372	8.933	10.04	11.09	15.49	16.99	15.28	70- 80	20.16	251.6	95.7,95.7
90	0.1018	0.6612	1.108	0.8255	0.0901	3.337	4.810	2.830	80- 90	6.889	258.4	98.4,98.4
100	0.2108	0.4733	0.6845	0.4908	0.1875	0.7560	1.252	0.8481	90-100	0.9162	259.4	98.7,98.7
110	0.3697	0.4497	0.6690	0.5170	0.3345	0.3116	1.043	0.3193	100-110	0.5942	260.0	98.9,98.9
120	0.5285	0.5586	0.5991	0.5431	0.4861	0.4115	0.4279	0.4243	110-120	0.4825	260.4	99.1,99.1
130	0.6732	0.6918	0.6985	0.6694	0.6213	0.5328	0.5396	0.5601	120-130	0.4969	260.9	99.3,99.3
140	0.8012	0.8084	0.8055	0.7766	0.7422	0.6493	0.6512	0.6840	130-140	0.5263	261.5	99.5,99.5
150	0.9174	0.9273	0.8935	0.8744	0.8537	0.7611	0.7558	0.8079	140-150	0.4981	262.0	99.7,99.7
160	1.029	1.034	1.005	0.9768	0.9817	0.8919	0.8842	0.9318	150-160	0.4180	262.4	99.8,99.8
170	1.133	1.134	1.117	1.091	1.112	1.044	1.029	1.063	160-170	0.2892	262.7	100,100
180	1.216	1.194	1.179	1.191	1.216	1.196	1.181	1.194	170-180	0.1078	262.8	100,100
DEG	LUMINOUS INTENSITY:cd									UNIT:lm		

Conical surface Flux(90deg): 140.36 lm

%lum = 53.4%

%lamp = 53.4%

Conical surface Flux(120deg): 199.26 lm

%lum = 75.8%

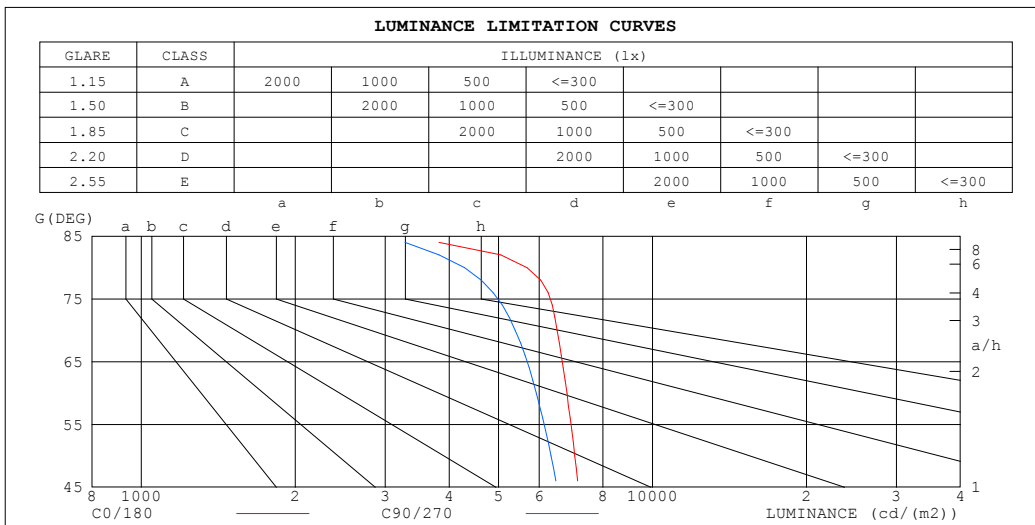
%lamp = 75.8%

C Range: 0 - 360DEG  
 C Interval: 22.5DEG  
 Test Speed: HIGH  
 Temperature:25.3DEG  
 Operators:  
 Test Date:2023-04-25

$\gamma$  Range: 0 - 180DEG  
 $\gamma$  Interval: 2.0DEG  
 Test System:EVERFINE GO-2000B\_V1 SYSTEM V2.00.450  
 Humidity:65.0%  
 Test Distance:5.749m [K=1.0000]  
 Remarks:

**LUMINANCE LIMITATION CURVES**

<b>NAME:</b> HFP1220SB.10.3K	<b>TYPE:</b>	<b>WEIGHT:</b>
<b>SPEC.:</b>	<b>DIM.:</b>	<b>SERIAL No.:</b>
<b>MFR.:</b> HELIFLEX	<b>SUR.:</b> 0.012*1	<b>Shielding Angle:</b>



LUMINANCE cd/ (m2)		
G (DEG)	C0/180	C90/270
85	4585	3931
80	5678	4290
75	6783	5412
70	6509	5390
65	6939	5949
60	6799	5925
55	7122	6328
50	7044	6329
45	7296	6650

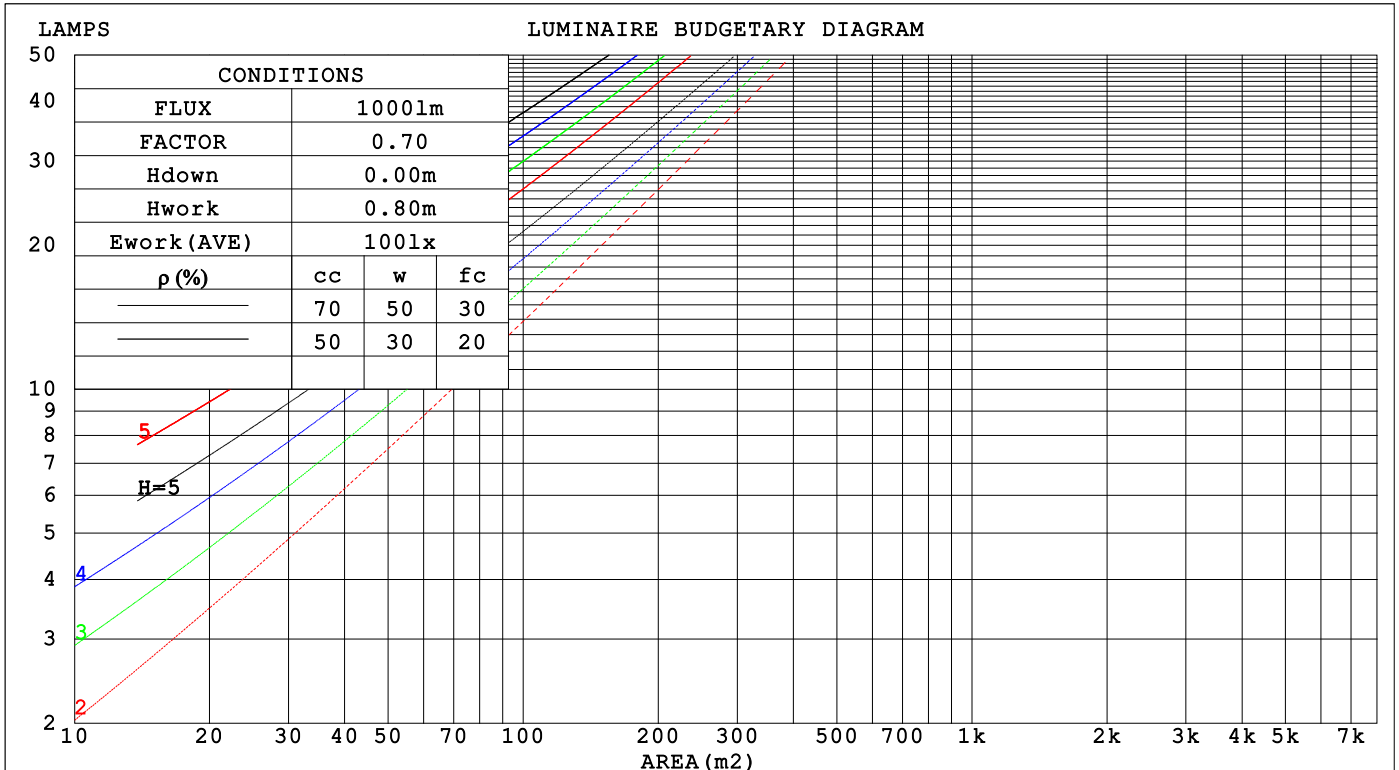
C Range: 0 - 360DEG  
 C Interval: 22.5DEG  
 Test Speed: HIGH  
 Temperature: 25.3DEG  
 Operators:  
 Test Date: 2023-04-25

γ Range: 0 - 180DEG  
 γ Interval: 2.0DEG  
 Test System: EVERFINE GO-2000B\_V1 SYSTEM V2.00.450  
 Humidity: 65.0%  
 Test Distance: 5.749m [K=1.0000]  
 Remarks:

**CU AND LUMINAIRE BUDGETARY ESTIMATE DIAGRAM**

NAME: HFP1220SB.10.3K	TYPE:	WEIGHT:
SPEC.:	DIM.:	SERIAL No.:
MFR.:HELIFLEX	SUR.: 0.012*1	Shielding Angle:

ρcc	80%			70%			50%			30%			10%			0
	50%	30%	10%	50%	30%	10%	50%	30%	10%	50%	30%	10%	50%	30%	10%	
ρw	50%	30%	10%	50%	30%	10%	50%	30%	10%	50%	30%	10%	50%	30%	10%	0
ρfc	20%			20%			20%			20%			20%			0
RCR	RCR:Room Cavity Ratio															
	Coefficients of Utilization(CU)															
0.0	1.19	1.19	1.19	1.16	1.16	1.16	1.10	1.10	1.10	1.05	1.05	1.05	1.01	1.01	1.01	.98
1.0	1.03	.98	.94	1.00	.96	.93	.96	.93	.89	.92	.89	.86	.88	.86	.84	.81
2.0	.89	.82	.76	.87	.81	.75	.83	.78	.73	.80	.75	.71	.77	.73	.70	.67
3.0	.78	.70	.63	.77	.69	.63	.73	.67	.61	.70	.65	.60	.68	.63	.59	.56
4.0	.69	.60	.54	.68	.60	.53	.65	.58	.52	.63	.56	.51	.60	.55	.50	.48
5.0	.62	.53	.46	.61	.52	.46	.58	.51	.45	.56	.50	.44	.54	.48	.44	.42
6.0	.56	.47	.40	.55	.46	.40	.53	.45	.39	.51	.44	.39	.49	.43	.38	.36
7.0	.50	.42	.35	.50	.41	.35	.48	.40	.35	.46	.39	.34	.45	.39	.34	.32
8.0	.46	.37	.32	.45	.37	.31	.44	.36	.31	.42	.36	.31	.41	.35	.31	.29
9.0	.42	.34	.28	.42	.34	.28	.40	.33	.28	.39	.32	.28	.38	.32	.28	.26
10.0	.39	.31	.26	.38	.31	.26	.37	.30	.25	.36	.30	.25	.35	.29	.25	.23



C Range: 0 - 360DEG  
 C Interval: 22.5DEG  
 Test Speed: HIGH  
 Temperature:25.3DEG  
 Operators:  
 Test Date:2023-04-25

γ Range: 0 - 180DEG  
 γ Interval: 2.0DEG  
 Test System:EVERFINE GO-2000B\_V1 SYSTEM V2.00.450  
 Humidity:65.0%  
 Test Distance:5.749m [K=1.0000]  
 Remarks:

WEC AND CCEC

NAME: HFP1220SB.10.3K	TYPE:	WEIGHT:
SPEC.:	DIM.:	SERIAL No.:
MFR.:HELIFLEX	SUR.: 0.012*1	Shielding Angle:

$\rho_{cc}$	80%			70%			50%			30%			10%			0
$\rho_w$	50%	30%	10%	50%	30%	10%	50%	30%	10%	50%	30%	10%	50%	30%	10%	0
$\rho_{fc}$	20%			20%			20%			20%			20%			0
RCR	RCR:Room Cavity Ratio						Wall Exitance Coefficients(WEC)									
0.0																
1.0	.321	.182	.058	.313	.179	.057	.299	.172	.055	.286	.165	.053	.274	.159	.051	
2.0	.298	.163	.050	.291	.160	.049	.279	.155	.048	.267	.150	.047	.256	.145	.046	
3.0	.274	.146	.044	.268	.144	.043	.257	.139	.042	.247	.135	.041	.237	.131	.041	
4.0	.252	.131	.038	.247	.129	.038	.237	.125	.037	.227	.122	.037	.219	.119	.036	
5.0	.232	.118	.034	.228	.117	.034	.219	.114	.034	.210	.111	.033	.203	.108	.033	
6.0	.215	.108	.031	.211	.106	.031	.203	.104	.030	.195	.102	.030	.188	.099	.029	
7.0	.200	.099	.028	.196	.098	.028	.189	.095	.028	.182	.093	.027	.176	.091	.027	
8.0	.186	.091	.026	.183	.090	.025	.177	.088	.025	.171	.086	.025	.165	.085	.025	
9.0	.174	.084	.024	.171	.084	.023	.166	.082	.023	.160	.080	.023	.155	.079	.023	
10.0	.164	.079	.022	.161	.078	.022	.156	.076	.022	.151	.075	.021	.146	.074	.021	

$\rho_{cc}$	80%			70%			50%			30%			10%			0
$\rho_w$	50%	30%	10%	50%	30%	10%	50%	30%	10%	50%	30%	10%	50%	30%	10%	0
$\rho_{fc}$	20%			20%			20%			20%			20%			0
RCR	RCR:Room Cavity Ratio						Ceiling Cavity Exitance Coefficients(CCEC)									
0.0	.203	.203	.203	.174	.174	.174	.118	.118	.118	.068	.068	.068	.022	.022	.022	
1.0	.194	.169	.146	.166	.145	.126	.113	.100	.087	.065	.058	.051	.021	.019	.016	
2.0	.186	.145	.110	.159	.124	.095	.109	.086	.066	.063	.050	.039	.020	.016	.013	
3.0	.178	.127	.087	.153	.110	.075	.105	.076	.053	.061	.044	.031	.019	.014	.010	
4.0	.170	.114	.071	.146	.098	.061	.101	.069	.043	.058	.040	.026	.019	.013	.008	
5.0	.163	.104	.060	.140	.090	.052	.096	.063	.037	.056	.037	.022	.018	.012	.007	
6.0	.156	.095	.052	.134	.082	.045	.092	.058	.032	.054	.034	.019	.017	.011	.006	
7.0	.149	.088	.046	.128	.077	.040	.088	.054	.028	.051	.032	.017	.017	.010	.006	
8.0	.142	.083	.042	.122	.072	.036	.085	.050	.026	.049	.030	.015	.016	.010	.005	
9.0	.136	.078	.038	.117	.067	.033	.081	.047	.024	.047	.028	.014	.015	.009	.005	
10.0	.130	.073	.035	.112	.064	.031	.078	.045	.022	.045	.027	.013	.015	.009	.004	

C Range: 0 - 360DEG  
 C Interval: 22.5DEG  
 Test Speed: HIGH  
 Temperature:25.3DEG  
 Operators:  
 Test Date:2023-04-25

$\gamma$  Range: 0 - 180DEG  
 $\gamma$  Interval: 2.0DEG  
 Test System:EVERFINE GO-2000B\_V1 SYSTEM V2.00.450  
 Humidity:65.0%  
 Test Distance:5.749m [K=1.0000]  
 Remarks:

**UGR(Unified Glare Rating) Table**

NAME: HFP1220SB.10.3K		TYPE:					WEIGHT:				
SPEC.:		DIM.:					SERIAL No.:				
MFR.:HELIFLEX		SUR.: 0.012*1					Shielding Angle:				
ceiling/cavity		0.7	0.7	0.5	0.5	0.3	0.7	0.7	0.5	0.5	0.3
walls		0.5	0.3	0.5	0.3	0.3	0.5	0.3	0.5	0.3	0.3
working plane		0.2	0.2	0.2	0.2	0.2	0.2	0.2	0.2	0.2	0.2
Room dimensions		Viewed crosswise					Viewed endwise				
x = 2H y = 2H		24.0	25.5	24.3	25.7	26.0	23.5	25.0	23.8	25.2	25.5
	3H	25.6	27.0	26.0	27.3	27.6	24.9	26.3	25.3	26.6	26.9
	4H	26.3	27.7	26.7	28.0	28.3	25.5	26.8	25.9	27.1	27.4
	6H	26.9	28.1	27.2	28.4	28.7	25.9	27.2	26.3	27.5	27.8
	8H	27.0	28.2	27.4	28.6	28.9	26.0	27.2	26.4	27.5	27.9
	12H	27.0	28.2	27.4	28.5	28.9	26.0	27.2	26.4	27.5	27.9
	4H 2H	24.5	25.8	24.9	26.1	26.4	24.1	25.4	24.4	25.7	26.0
	3H	26.3	27.5	26.7	27.8	28.2	25.8	26.9	26.1	27.2	27.6
	4H	27.2	28.2	27.6	28.6	29.0	26.5	27.5	26.9	27.9	28.2
	6H	27.8	28.8	28.3	29.2	29.6	27.0	27.9	27.4	28.3	28.7
	8H	28.0	28.9	28.5	29.3	29.7	27.1	28.0	27.5	28.4	28.8
	12H	28.1	28.9	28.5	29.3	29.8	27.1	28.0	27.6	28.4	28.8
	8H 4H	27.4	28.3	27.8	28.7	29.1	26.7	27.6	27.2	28.0	28.4
	6H	28.2	28.9	28.6	29.3	29.8	27.4	28.1	27.8	28.5	29.0
	8H	28.5	29.1	29.0	29.6	30.1	27.6	28.2	28.0	28.7	29.2
	12H	28.6	29.1	29.1	29.6	30.1	27.7	28.2	28.2	28.7	29.2
	12H 4H	27.4	28.2	27.8	28.6	29.0	26.8	27.6	27.2	28.0	28.4
	6H	28.2	28.9	28.7	29.3	29.8	27.4	28.1	27.9	28.5	29.0
	8H	28.5	29.1	29.0	29.6	30.1	27.6	28.2	28.1	28.7	29.2
Variations with the observer position at spacings(CIE Pub.117):											
S = 1.0H		+ 0.1 / - 0.2					+ 0.2 / - 0.2				
1.5H		+ 0.1 / - 0.2					+ 0.2 / - 0.3				
2.0H		+ 0.2 / - 0.3					+ 0.2 / - 0.3				

CIE Pub.117, 262.8 lm Total Lamp Luminous Flux Correct (8log(F/F0) = -4.6)  
 Area: 0.012 m2

C Range: 0 - 360DEG  
 C Interval: 22.5DEG  
 Test Speed: HIGH  
 Temperature:25.3DEG  
 Operators:  
 Test Date:2023-04-25

γ Range: 0 - 180DEG  
 γ Interval: 2.0DEG  
 Test System:EVERFINE GO-2000B\_V1 SYSTEM V2.00.450  
 Humidity:65.0%  
 Test Distance:5.749m [K=1.0000]  
 Remarks:

**UTILIZATION FACTORS TABLE**

NAME: HFP1220SB.10.3K	TYPE:	WEIGHT:
SPEC.:	DIM.:	SERIAL No.:
MFR.:HELIFLEX	SUR.: 0.012*1	Shielding Angle:

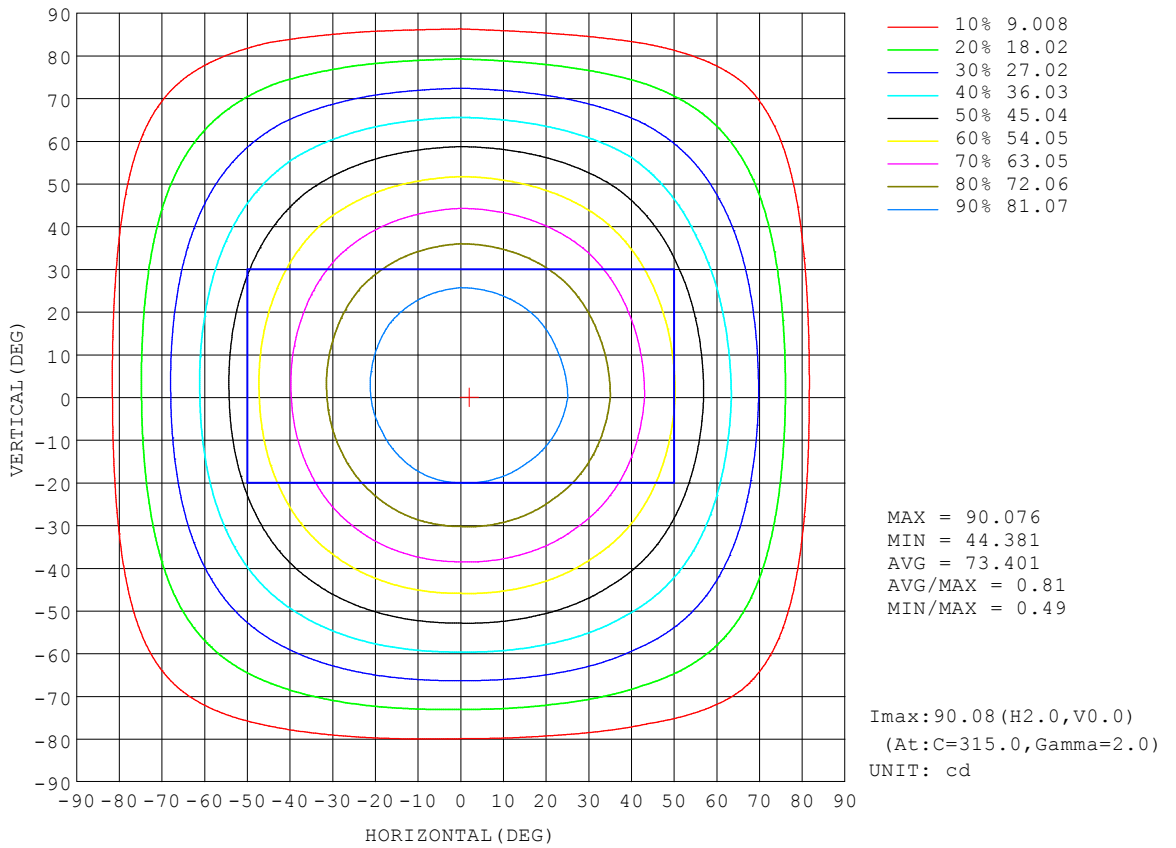
REFLECTANCE										
Ceiling	0.8	0.8	0.8	0.7	0.7	0.7	0.5	0.5	0.5	0
Walls	0.7	0.5	0.3	0.7	0.5	0.3	0.7	0.5	0.3	0
Working plane	0.2	0.2	0.2	0.2	0.2	0.2	0.2	0.2	0.2	0
ROOM INDEX	UTILIZATION FACTORS (PERCENT) $k(RI) \times RCR = 5$									
$k = 0.60$	57	45	38	56	45	38	55	44	38	31
0.80	67	55	47	65	54	47	64	53	47	40
1.00	75	64	56	74	63	56	71	64	55	48
1.25	82	71	64	80	70	63	77	69	62	55
1.50	87	77	70	85	76	69	82	74	68	60
2.00	94	85	78	92	84	77	88	81	76	67
2.50	98	90	83	96	88	82	91	85	80	72
3.00	101	94	88	99	92	87	94	89	85	76
4.00	105	99	94	103	97	93	98	94	90	81
5.00	108	103	98	105	101	97	100	97	93	84
ROOM INDEX	UF(total)									Direct
According to DIN EN 13032-2 2004			Suspended				SHRNOM = 1.25			

C Range: 0 - 360DEG  
 C Interval: 22.5DEG  
 Test Speed: HIGH  
 Temperature:25.3DEG  
 Operators:  
 Test Date:2023-04-25

$\gamma$  Range: 0 - 180DEG  
 $\gamma$  Interval: 2.0DEG  
 Test System:EVERFINE GO-2000B\_V1 SYSTEM V2.00.450  
 Humidity:65.0%  
 Test Distance:5.749m [K=1.0000]  
 Remarks:

**ISOCANDELA DIAGRAM**

NAME: HFP1220SB.10.3K	TYPE:	WEIGHT:
SPEC.:	DIM.:	SERIAL No.:
MFR.:HELIFLEX	SUR.: 0.012*1	Shielding Angle:



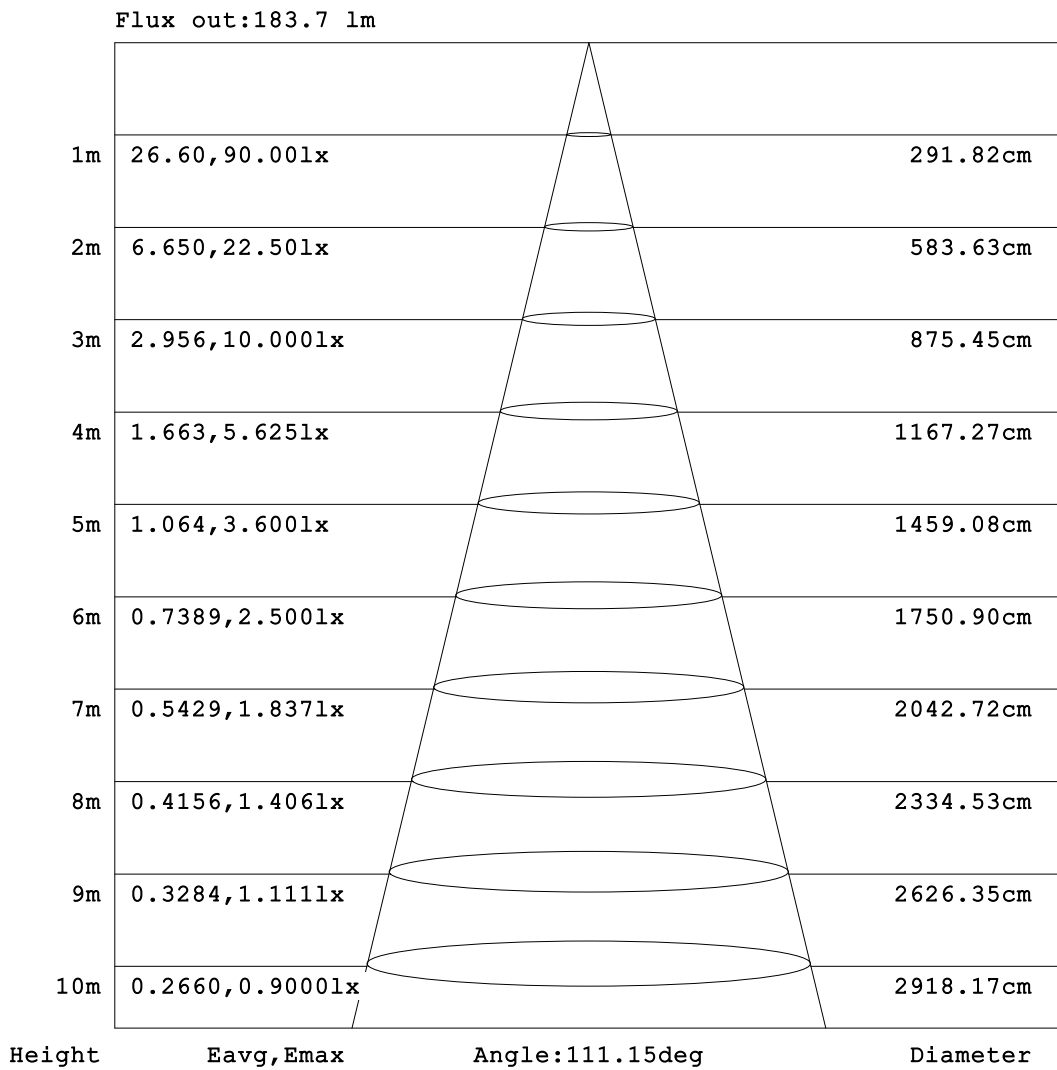
C Range: 0 - 360DEG  
 C Interval: 22.5DEG  
 Test Speed: HIGH  
 Temperature: 25.3DEG  
 Operators:  
 Test Date: 2023-04-25

γ Range: 0 - 180DEG  
 γ Interval: 2.0DEG  
 Test System: EVERFINE GO-2000B\_V1 SYSTEM V2.00.450  
 Humidity: 65.0%  
 Test Distance: 5.749m [K=1.0000]  
 Remarks:



**AAI Figure**

NAME: HFP1220SB.10.3K	TYPE:	WEIGHT:
SPEC.:	DIM.:	SERIAL No.:
MFR.:HELIFLEX	SUR.: 0.012*1	Shielding Angle:



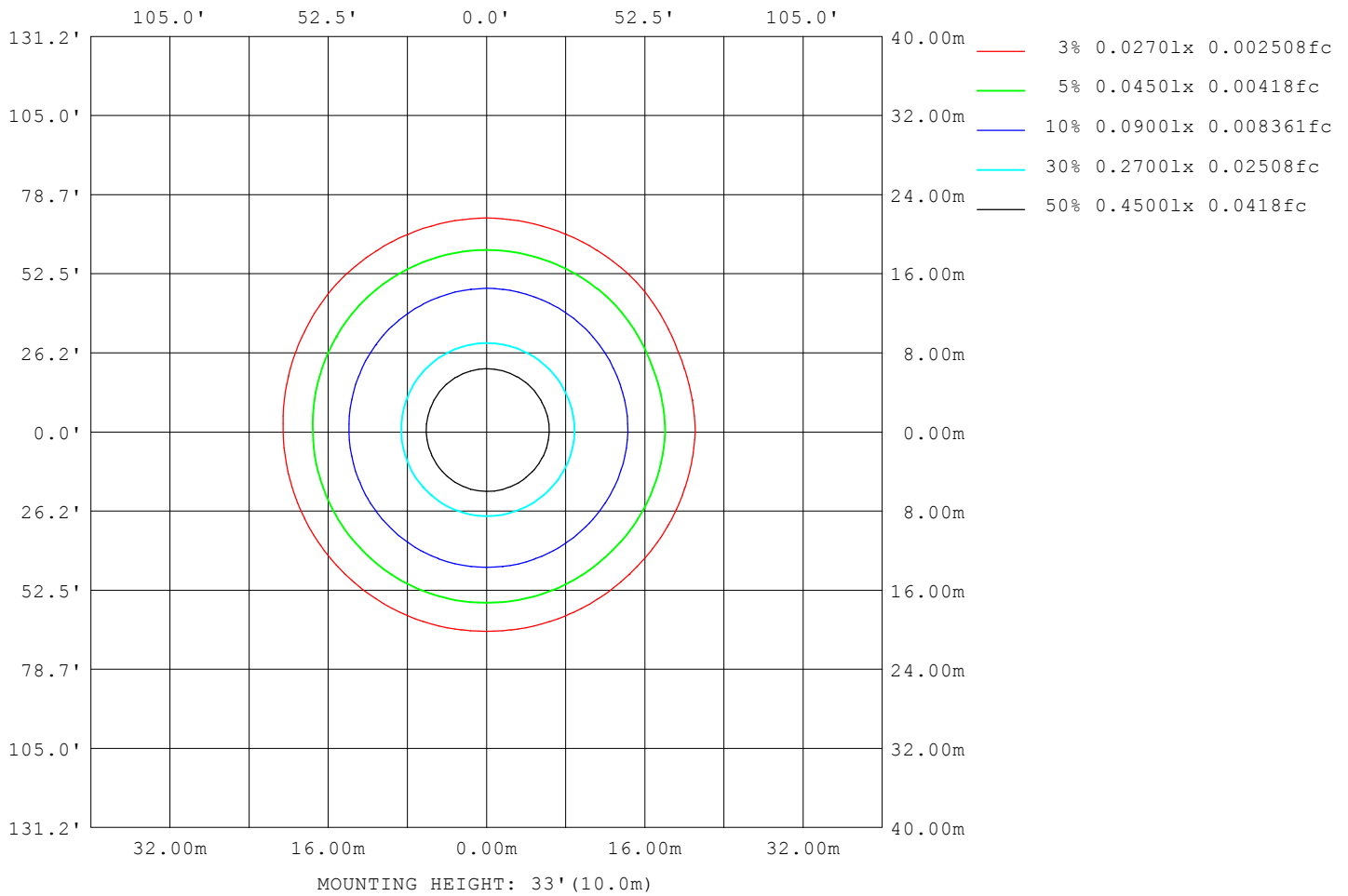
Note: The Curves indicate the illuminated area and the average illumination when the luminaire is at different distance.

C Range: 0 - 360DEG  
 C Interval: 22.5DEG  
 Test Speed: HIGH  
 Temperature: 25.3DEG  
 Operators:  
 Test Date: 2023-04-25

γ Range: 0 - 180DEG  
 γ Interval: 2.0DEG  
 Test System: EVERFINE GO-2000B\_V1 SYSTEM V2.00.450  
 Humidity: 65.0%  
 Test Distance: 5.749m [K=1.0000]  
 Remarks:

**ISOLUX DIAGRAM**

<b>NAME:</b> HFP1220SB.10.3K	<b>TYPE:</b>	<b>WEIGHT:</b>
<b>SPEC.:</b>	<b>DIM.:</b>	<b>SERIAL No.:</b>
<b>MFR.:</b> HELIFLEX	<b>SUR.:</b> 0.012*1	<b>Shielding Angle:</b>



C Range: 0 - 360DEG  
 C Interval: 22.5DEG  
 Test Speed: HIGH  
 Temperature: 25.3DEG  
 Operators:  
 Test Date: 2023-04-25

γ Range: 0 - 180DEG  
 γ Interval: 2.0DEG  
 Test System: EVERFINE GO-2000B\_V1 SYSTEM V2.00.450  
 Humidity: 65.0%  
 Test Distance: 5.749m [K=1.0000]  
 Remarks:

LED Avg.L Report

NAME: HFP1220SB.10.3K	TYPE:	WEIGHT:
SPEC.:	DIM.:	SERIAL No.:
MFR.:HELIFLEX	SUR.: 0.012*1	Shielding Angle:

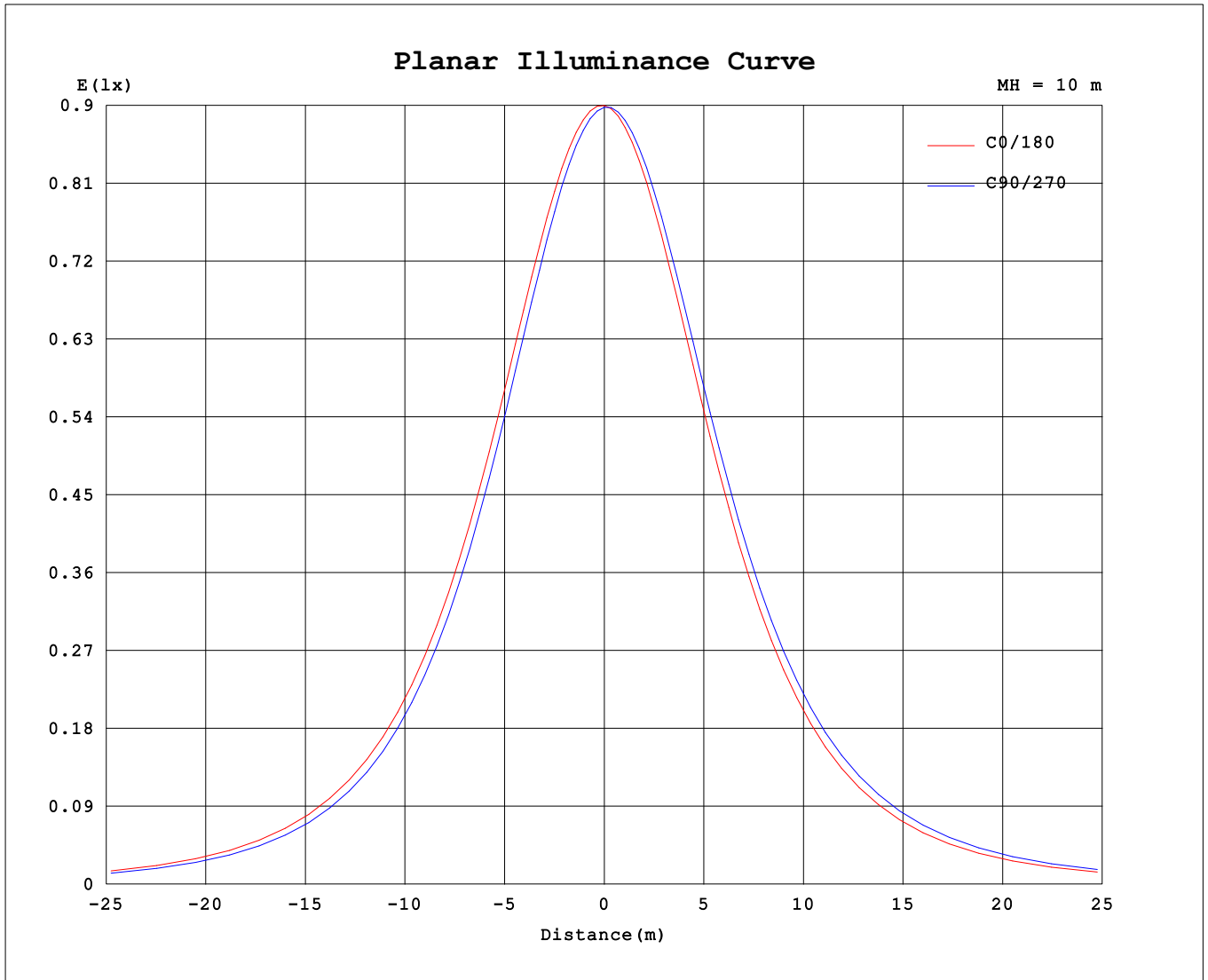
AvgL	cd/m2
L_0~180 (65) av	6356
L_0~180 (75) av	5994
L_0~180 (85) av	3325
L_90~270 (65) av	6462
L_90~270 (75) av	6279
L_90~270 (85) av	6596
L_45 (65) av	6421
L_45 (75) av	6172
L_45 (85) av	5861

Standard: GB/T 29293-2012

C Range: 0 - 360DEG  
 C Interval: 22.5DEG  
 Test Speed: HIGH  
 Temperature:25.3DEG  
 Operators:  
 Test Date:2023-04-25

γ Range: 0 - 180DEG  
 γ Interval: 2.0DEG  
 Test System:EVERFINE GO-2000B\_V1 SYSTEM V2.00.450  
 Humidity:65.0%  
 Test Distance:5.749m [K=1.0000]  
 Remarks:

**Planar Illuminance Curve**



C Range: 0 - 360DEG  
 C Interval: 22.5DEG  
 Test Speed: HIGH  
 Temperature: 25.3DEG  
 Operators:  
 Test Date: 2023-04-25

$\gamma$  Range: 0 - 180DEG  
 $\gamma$  Interval: 2.0DEG  
 Test System: EVERFINE GO-2000B\_V1 SYSTEM V2.00.450  
 Humidity: 65.0%  
 Test Distance: 5.749m [K=1.0000]  
 Remarks:

LUMINOUS DISTRIBUTION INTENSITY DATA

NAME: HFP1220SB.10.3K	TYPE:	WEIGHT:
SPEC.:	DIM.:	SERIAL No.:
MFR.: HELIFLEX	SUR.: 0.012*1	Shielding Angle:

Table--1

UNIT: cd

C (DEG) \ γ (DEG)	0	22.5	45	67.5	90	112.5	135	157.5	180	202.5	225	247.5	270	292.5	315	337.5			
0	89.7	89.7	89.7	89.7	89.7	89.7	89.7	89.7	89.7	89.7	89.7	89.7	89.7	89.7	89.7	89.7			
5	89.7	89.6	89.3	89.2	89.1	89.1	89.0	89.1	89.1	89.3	89.6	89.8	89.8	89.8	89.8	89.8			
10	88.7	88.3	87.7	87.3	87.0	87.0	87.0	87.1	87.3	87.7	88.4	88.7	89.0	88.9	89.0	88.9			
15	87.4	86.7	85.9	85.4	85.0	85.0	85.0	85.2	85.4	86.0	86.9	87.4	87.7	87.7	87.8	87.6			
20	84.3	83.4	82.3	81.5	81.0	81.1	81.1	81.3	81.6	82.5	83.7	84.3	84.8	84.8	84.9	84.6			
25	81.6	80.5	79.2	78.4	77.8	77.9	77.9	78.2	78.5	79.6	80.9	81.7	82.2	82.3	82.4	82.0			
30	76.7	75.4	73.8	72.9	72.3	72.3	72.4	72.7	73.1	74.4	76.0	76.9	77.5	77.6	77.6	77.2			
35	72.9	71.4	69.8	68.8	68.1	68.2	68.3	68.7	69.1	70.5	72.3	73.2	73.9	73.9	73.9	73.4			
40	66.4	64.8	63.0	62.0	61.3	61.4	61.5	62.0	62.5	64.1	66.0	67.1	67.8	67.7	67.7	67.1			
45	61.7	60.0	58.1	57.1	56.4	56.6	56.7	57.2	57.8	59.5	61.5	62.5	63.3	63.2	63.1	62.4			
50	54.2	52.4	50.4	49.4	48.8	49.0	49.2	49.8	50.4	52.2	54.3	55.4	56.1	55.9	55.8	54.9			
55	48.9	47.0	45.0	44.1	43.5	43.8	44.0	44.6	45.2	47.1	49.2	50.4	51.1	50.8	50.6	49.7			
60	40.7	38.8	36.9	36.0	35.5	35.9	36.2	36.8	37.4	39.3	41.5	42.6	43.3	43.0	42.6	40.9			
65	35.1	33.2	31.3	30.6	30.1	30.6	30.9	31.5	32.1	34.1	36.3	37.4	38.1	37.6	37.1	34.7			
70	26.6	24.8	23.0	22.4	22.1	22.6	23.0	23.6	24.2	26.2	28.5	29.5	30.1	29.5	28.9	27.3			
75	21.0	19.2	17.5	17.0	16.8	17.4	17.8	18.4	19.0	21.0	23.2	24.3	24.9	24.2	23.4	22.1			
80	11.8	10.9	9.37	8.96	8.93	9.57	10.0	10.7	11.1	13.3	15.5	16.5	17.0	16.2	15.3	13.7			
85	4.78	5.48	4.16	4.01	4.11	4.55	4.91	5.68	5.84	8.20	10.4	11.4	11.8	10.9	9.93	8.28			
90	0.10	0.34	0.66	0.96	1.11	1.10	0.83	0.42	0.09	1.28	3.34	4.43	4.81	3.97	2.83	1.16			
95	0.13	0.27	0.49	0.68	0.75	0.69	0.51	0.28	0.12	0.42	0.95	1.58	1.87	1.49	1.02	0.50			
100	0.21	0.28	0.47	0.62	0.68	0.63	0.49	0.31	0.19	0.20	0.76	1.07	1.25	1.15	0.85	0.27			
105	0.27	0.29	0.48	0.62	0.67	0.62	0.49	0.30	0.25	0.23	0.68	0.99	1.15	1.07	0.79	0.22			
110	0.37	0.38	0.45	0.62	0.67	0.62	0.52	0.38	0.33	0.30	0.31	0.90	1.04	0.93	0.32	0.30			
115	0.43	0.44	0.47	0.63	0.67	0.63	0.47	0.44	0.40	0.35	0.34	0.43	0.75	0.45	0.35	0.34			
120	0.53	0.53	0.56	0.57	0.60	0.57	0.54	0.52	0.49	0.43	0.41	0.42	0.43	0.43	0.42	0.43			
125	0.59	0.58	0.61	0.62	0.62	0.61	0.59	0.58	0.54	0.48	0.46	0.47	0.47	0.48	0.48	0.49			
130	0.67	0.67	0.69	0.70	0.70	0.69	0.67	0.65	0.62	0.56	0.53	0.54	0.54	0.55	0.56	0.57			
135	0.73	0.73	0.74	0.74	0.74	0.74	0.71	0.70	0.68	0.61	0.58	0.58	0.59	0.60	0.61	0.63			
140	0.80	0.81	0.81	0.81	0.81	0.80	0.78	0.77	0.74	0.68	0.65	0.65	0.65	0.67	0.68	0.72			
145	0.85	0.86	0.86	0.85	0.84	0.84	0.82	0.81	0.79	0.73	0.69	0.70	0.69	0.72	0.73	0.76			
150	0.92	0.93	0.93	0.91	0.89	0.90	0.87	0.87	0.85	0.80	0.76	0.76	0.76	0.78	0.81	0.84			
155	0.96	0.97	0.97	0.95	0.94	0.94	0.92	0.92	0.91	0.85	0.81	0.81	0.80	0.83	0.85	0.89			
160	1.03	1.04	1.03	1.01	1.01	0.99	0.98	0.99	0.98	0.93	0.89	0.88	0.88	0.90	0.93	0.97			
165	1.07	1.08	1.07	1.05	1.05	1.03	1.02	1.04	1.04	0.99	0.95	0.94	0.95	0.95	0.98	1.02			
170	1.13	1.15	1.13	1.11	1.12	1.09	1.09	1.11	1.11	1.08	1.04	1.02	1.03	1.03	1.06	1.10			
175	1.18	1.18	1.17	1.15	1.15	1.13	1.14	1.16	1.16	1.14	1.11	1.09	1.09	1.09	1.12	1.15			
180	1.22	1.21	1.19	1.18	1.18	1.17	1.19	1.22	1.22	1.21	1.20	1.18	1.18	1.17	1.19	1.21			

C Range: 0 - 360DEG  
 C Interval: 22.5DEG  
 Test Speed: HIGH  
 Temperature: 25.3DEG  
 Operators:  
 Test Date: 2023-04-25

γ Range: 0 - 180DEG  
 γ Interval: 2.0DEG  
 Test System: EVERFINE GO-2000B\_V1 SYSTEM V2.00.450  
 Humidity: 65.0%  
 Test Distance: 5.749m [K=1.0000]  
 Remarks: