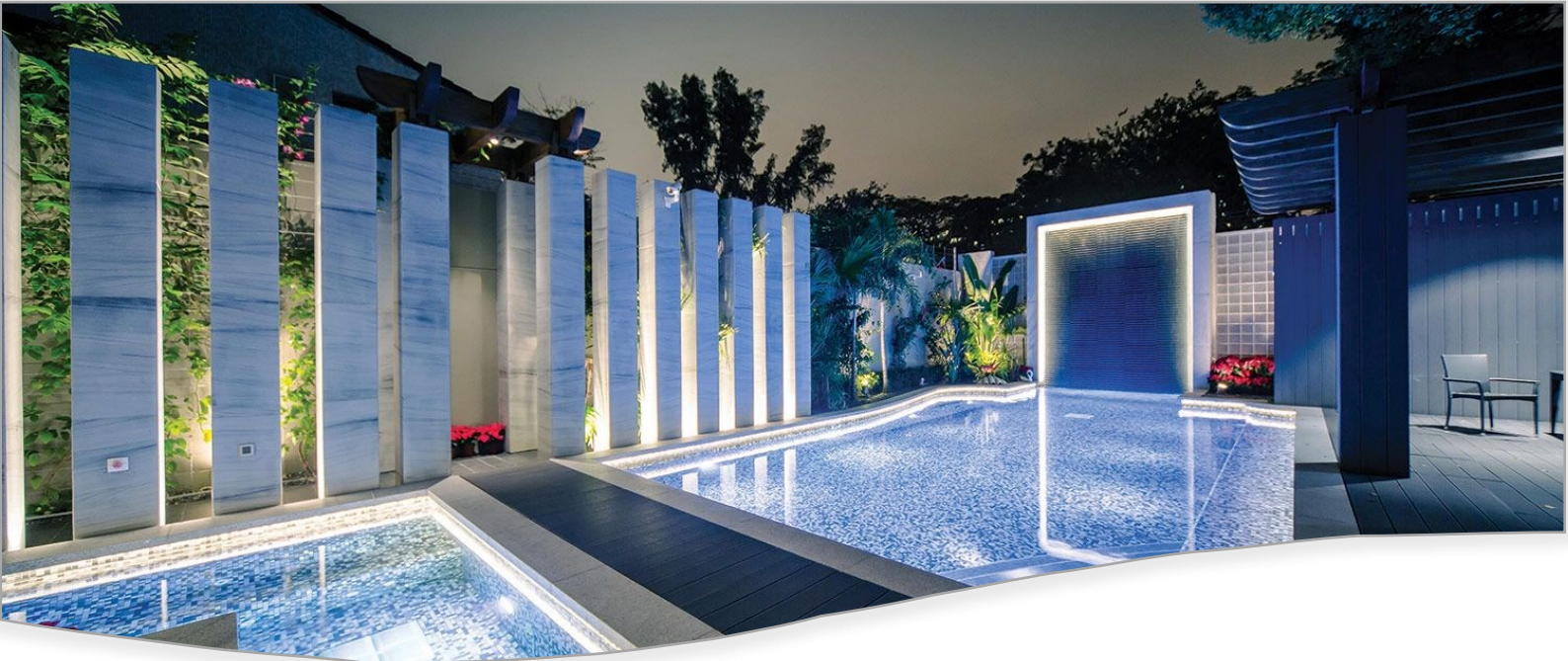


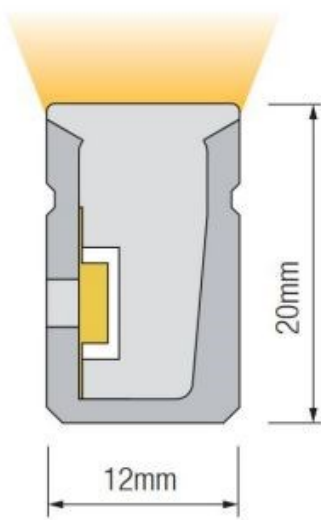
HELIFLEX

PREMIUM



12x20mm | Side Bend | Single colour | RGBW

IP67 | -20 to 45deg C | Uniform dot free illumination | Silicon extrusion moulding | High UV and salt water resistance | High impact resistance



**SINGLE COLOUR
WHITE**



5w per metre (up to 25m powered one end)

CODE	V	W	COLOUR	CUT (mm)	Lm/m	MAX
HFP1220SB.5.27K	24	5	2700k	50		25m
HFP1220SB.5.3K	24	5	3000k	50	157	25m
HFP1220SB.5.4K	24	5	4000k	50		25m
HFP1220SB.5.65K	24	5	6500k	50		25m

7.2w per metre (up to 20m powered one end)

CODE	V	W	COLOUR	CUT (mm)	Lm/m	MAX
HF1220SB.72.27K	24	7.2	2700k	50		20m
HF1220SB.72.3K	24	7.2	3000k	50	228	20m
HF1220SB.72.4K	24	7.2	4000k	50		20m
HF1220SB.72.65K	24	7.2	6500k	50		20m



**SINGLE COLOUR
WHITE**



10w per metre (up to 15m powered one end)

CODE	V	W	COLOUR	CUT (mm)	Lm/m	MAX
HFP1220SB.10.27K	24	10	2700k	50		25m
HFP1220SB.10.3K	24	10	3000k	50	308	25m
HFP1220SB.10.4K	24	10	4000k	50		25m
HFP1220SB.10.65K	24	10	6500k	50		25m

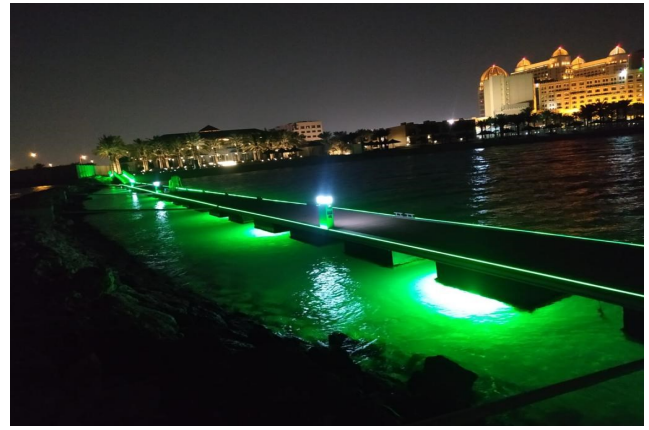
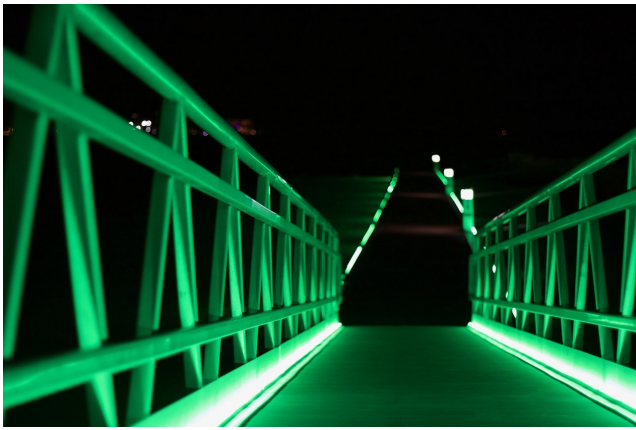
15w per metre (up to 12m powered one end)

CODE	V	W	COLOUR	CUT (mm)	Lm/m	MAX
HFP1220SB.15.27K	24	15	2700k	50		12m
HFP1220SB.15.3K	24	15	3000k	50	433	12m
HFP1220SB.15.4K	24	15	4000k	50		12m
HFP1220SB.15.65K	24	15	6500k	50		12m

18w per metre (up to 15m powered both ends)

CODE	V	W	COLOUR	CUT (mm)	Lm/m	MAX
HFP1220SB.18.27K	24	18	2700k	50		15m
HFP1220SB.18.3K	24	18	3000k	50		15m
HFP1220SB.18.4K	24	18	4000k	50	1050	15m
HFP1220SB.18.65K	24	18	6500k	50		15m





SINGLE COLOUR
BLUE | GREEN | RED



CODE	V	W	COLOUR	CUT (mm)	Lm/m	MAX
HFP1220SB.5.BL	24	5	BLUE	50	57	25m
HFP1220SB.5.GR	24	5	GREEN	50	308	25m
HFP1220SB.5.RD	24	5	RED	50	112	25m

CODE	V	W	COLOUR	CUT (mm)	Lm/m	MAX
HFP1220SB.72.BL	24	7.2	BLUE	50	82	20m
HFP1220SB.5.GR	24	7.2	GREEN	50	444	20m
HFP1220SB.5.RD	24	7.2	RED	50	162	20m

CODE	V	W	COLOUR	CUT (mm)	Lm/m	MAX
HFP1220SB.10	24	10	BLUE	50	107	15m
HFP1220SB.10	24	10	GREEN	50	548	15m
HFP1220SB.10	24	10	RED	50	238	15m

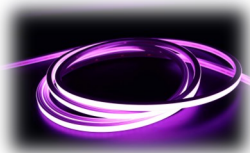
CODE	V	W	COLOUR	CUT (mm)	Lm/m	MAX
HFP1220SB.15	24	15	BLUE	50	149	12m
HFP1220SB.15	24	15	GREEN	50	697	12m
HFP1220SB.15	24	15	RED	50	323	12m





RGBW

CODE	V	W	COLOUR	CUT (mm)	Lm/m	MAX
HFP1220SB.12.RGBW27K	24	12	RGB+2700	62.5		16m
HFP1220SB.5.RGBW3K	24	12	RGB+3000	62.5		16m
HFP1220SB.5.RGBW4K	24	12	RGB+4000	62.5		16m
HFP1220SB.5.RGBW65K	24	12	RGB+6500	62.5		16m



RGBW– DIGITAL ADDRESSABLE

CODE	V	W	COLOUR	CUT (mm)	pX/m	MAX
HFP1220SB.16.RGBW27K	24	16	RGB+2700	125	8	5m
HFP1220SB.16.RGBW3K	24	16	RGB+3000	125	8	5m
HFP1220SB.16.RGBW4K	24	16	RGB+4000	125	8	5m
HFP1220SB.16.RGBW65K	24	16	RGB+6500	125	8	5m





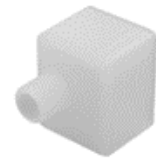
HFP1220SB-MCU

Fixing clip



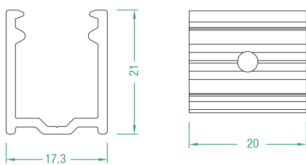
HFP1220SB-PCE

Power cord end



HFP1220SB-PCS

Power cord side



HFP1220SBMC1M FIXING CHANNEL 1m | HFP1220SBFMCH1M

