

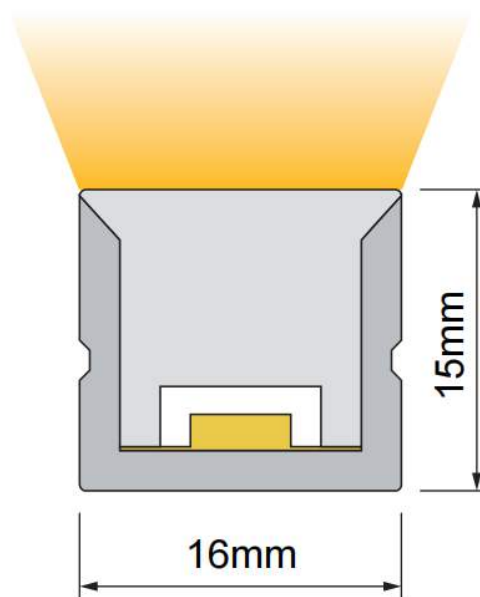
# HELIFLEX

PREMIUM



**16x15mm | Top Bend | Single colour | RGBW**

IP67 | -20 to 45deg C | Uniform dot free illumination | Silicon extrusion moulding | High UV and salt water resistance | High impact resistance



**SINGLE COLOUR  
WHITE**



**5w per metre (up to 25m powered one end)**

CODE	V	W	COLOUR	CUT (mm)	Lm/m	MAX
HFP1615TB.5.27K	24	5	2700k	50		25m
HFP1615TB.5.3K	24	5	3000k	50	240	25m
HFP1615TB.5.4K	24	5	4000k	50		25m
HFP1615TB.5.65K	24	5	6500k	50		25m

**7.2w per metre (up to 20m powered one end)**

CODE	V	W	COLOUR	CUT (mm)	Lm/m	MAX
HF1615TB.72.27K	24	7.2	2700k	50		20m
HF1615TB.72.3K	24	7.2	3000k	50	346	20m
HF1615TB.72.4K	24	7.2	4000k	50		20m
HF1615TB.72.65K	24	7.2	6500k	50		20m



## SINGLE COLOUR WHITE



### 10w per metre (up to 15m powered one end)

CODE	V	W	COLOUR	CUT (mm)	Lm/m	MAX
HFP1615TB.10.27K	24	10	2700k	50		15m
HFP1615TB.10.3K	24	10	3000k	50	460	15m
HFP1615TB.10.4K	24	10	4000k	50		15m
HFP1615TB.10.65K	24	10	6500k	50		15m

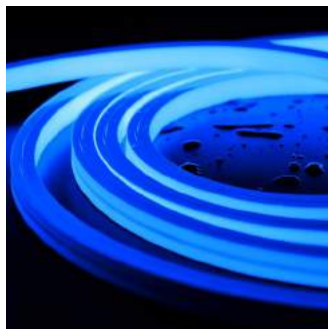
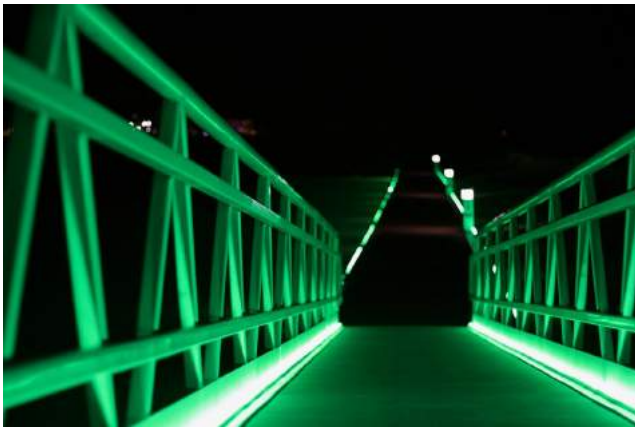
### 15w per metre (up to 12m powered one end)

CODE	V	W	COLOUR	CUT (mm)	Lm/m	MAX
HF1615TB.15.27K	24	15	2700k	50		12m
HF1615TB.15.3K	24	15	3000k	50	628	12m
HF1615TB.15.4K	24	15	4000k	50		12m
HF1615TB.15.65K	24	15	6500k	50		12m

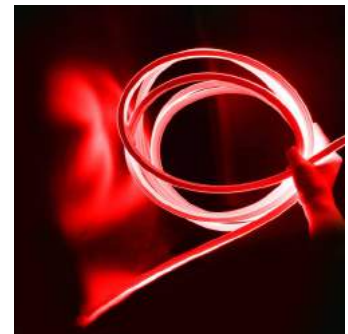
### 18w per metre (up to 15m powered both ends)

CODE	V	W	COLOUR	CUT (mm)	Lm/m	MAX
HF1615TB.18.27K	24	18	2700k	50		15m
HF1615TB.18.3K	24	18	3000k	50		15m
HF1615TB.18.4K	24	18	4000k	50	1340	15m
HF1615TB.18.65K	24	18	6500k	50		15m





**SINGLE COLOUR**  
**BLUE | GREEN | RED**



CODE	V	W	COLOUR	CUT (mm)	Lm/m	MAX
HFP1615TB.5.BL	24	5	BLUE	50	57	25m
HFP1615TB.5.GR	24	5	GREEN	50	308	25m
HFP1615TB.5.RD	24	5	RED	50	112	25m

CODE	V	W	COLOUR	CUT (mm)	Lm/m	MAX
HFP1615TB.72.BL	24	7.2	BLUE	50	82	20m
HFP1615TB.5.GR	24	7.2	GREEN	50	444	20m
HFP1615TB.5.RD	24	7.2	RED	50	162	20m

CODE	V	W	COLOUR	CUT (mm)	Lm/m	MAX
HFP1615TB.10	24	10	BLUE	50	107	15m
HFP1615TB.10	24	10	GREEN	50	548	15m
HFP1615TB.10	24	10	RED	50	238	15m

CODE	V	W	COLOUR	CUT (mm)	Lm/m	MAX
HFP1615TB.15	24	15	BLUE	50	149	12m
HFP1615TB.15	24	15	GREEN	50	697	12m
HFP1615TB.15	24	15	RED	50	323	12m





## RGBW

CODE	V	W	COLOUR	CUT (mm)	Lm/m	MAX
HFP1615TB.12.RGBW27K	24	12	RGB+2700	62.5		16m
HFP1615TB.5.RGBW3K	24	12	RGB+3000	62.5		16m
HFP1615TB.5.RGBW4K	24	12	RGB+4000	62.5		16m
HFP1615TB.5.RGBW65K	24	12	RGB+6500	62.5		16m



## RGBW– DIGITAL ADDRESSABLE

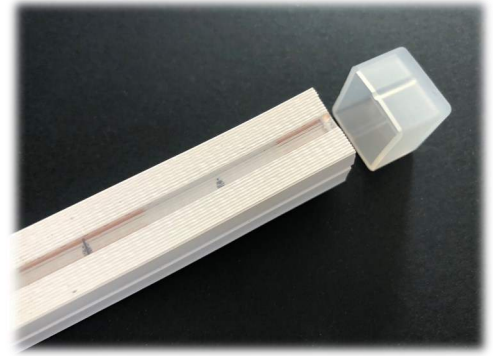
CODE	V	W	COLOUR	CUT (mm)	pX/m	MAX
HFP1615TB.16.RGBW27K	24	16	RGB+2700	125	8	5m
HFP1615TB.16.RGBW3K	24	16	RGB+3000	125	8	5m
HFP1615TB.16.RGBW4K	24	16	RGB+4000	125	8	5m
HFP1615TB.16.RGBW65K	24	16	RGB+6500	125	8	5m





## HFCT

HELIFLEX CUTTING TOOL  
AND END CAP ASSEMBLY



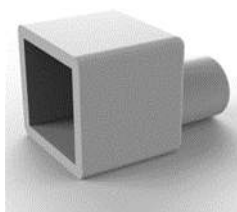
HFP1615TB.PCS

Power cord side



HFP1615TB.PCE

Power cord end



HFP1615TB.PCEC



HFP1615TB.MCU

Mounting clip



HFCON

Connectors male/ female



HFP 1615TB.MCH

Mounting Channel

