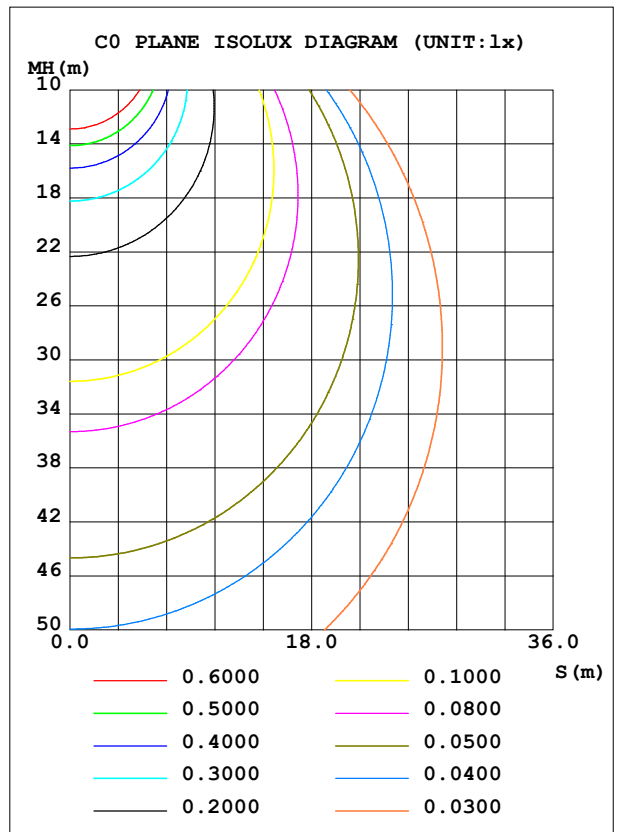
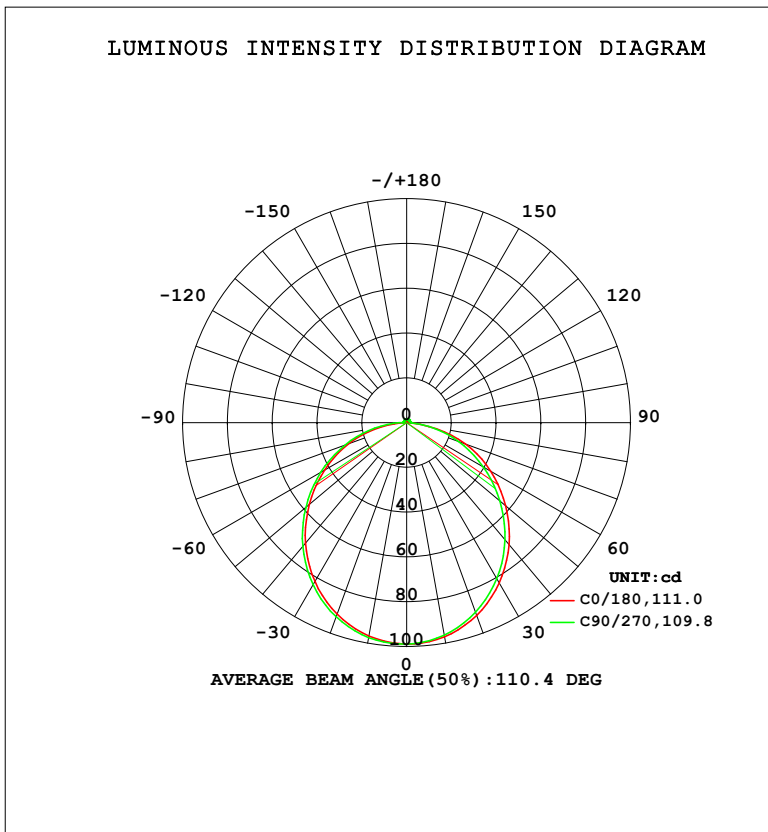


LUMINAIRE PHOTOMETRIC TEST REPORT

NAME: HFP1615TB.5.4K	TYPE:	WEIGHT:
SPEC.:	DIM.:	SERIAL No.:
MFR.:HELIFLEX	SUR.: 0.016*1	Shielding Angle:

DATA OF LAMP		PHOTOMETRIC DATA			
MODEL	4000K RA90	Imax (cd)	98.93	S/MH (C0/180)	1.24
NOMINAL POWER (W)	5	LOR (%)	100.0	S/MH (C90/270)	1.26
RATED VOLTAGE (V)	24	TOTAL FLUX (lm)	286.47	η UP, DN (C0-180)	1.3, 47.6
NOMINAL FLUX (lm)	286.468	CIE CLASS	DIRECT	η UP, DN (C180-360)	1.2, 49.9
LAMPS INSIDE	1	η up (%)	2.5	CIBSE SHR NOM	1.25
TEST VOLTAGE (V)	24	η down (%)	97.5	CIBSE SHR MAX	1.35



C Range: 0 - 360DEG
 C Interval: 22.5DEG
 Test Speed: HIGH
 Temperature: 25.3DEG
 Operators:
 Test Date: 2024-04-02

γ Range: 0 - 180DEG
 γ Interval: 2.0DEG
 Test System: EVERFINE GO-2000B_V1 SYSTEM V2.00.450
 Humidity: 65.0%
 Test Distance: 5.749m [K=1.0000]
 Remarks:

ZONAL FLUX DIAGRAM

ZONAL FLUX DIAGRAM:

γ	C0	C45	C90	C135	C180	C225	C270	C315	γ	Φ zone	Φ total	%lum,lamp
10	97.08	96.47	96.36	96.69	96.79	97.46	97.50	97.24	0- 10	9.346	9.346	3.26,3.26
20	91.55	90.37	90.09	90.75	91.00	92.21	92.23	91.80	10- 20	26.67	36.02	12.6,12.6
30	82.71	80.99	80.51	81.50	81.93	83.54	83.60	82.97	20- 30	40.14	76.15	26.6,26.6
40	71.17	68.97	68.31	69.58	70.28	72.12	72.17	71.42	30- 40	47.94	124.1	43.3,43.3
50	57.76	55.14	54.33	55.84	56.81	58.71	58.72	57.88	40- 50	49.27	173.4	60.5,60.5
60	43.29	40.41	39.55	41.21	42.39	44.21	44.26	43.23	50- 60	44.41	217.8	76,76
70	27.85	25.26	24.77	26.27	27.49	29.40	29.19	28.21	60- 70	34.50	252.3	88.1,88.1
80	9.958	10.34	10.17	11.53	11.76	14.64	14.54	13.26	70- 80	20.93	273.2	95.4,95.4
90	0.0989	1.101	1.916	1.086	0.0944	1.214	1.701	1.019	80- 90	6.109	279.3	97.5,97.5
100	0.2356	1.270	1.897	1.315	0.2124	1.094	1.739	1.126	90-100	1.146	280.5	97.9,97.9
110	0.4218	1.134	1.478	1.081	0.3821	1.039	1.404	1.143	100-110	1.097	281.6	98.3,98.3
120	0.6010	1.028	1.354	0.9733	0.5519	0.9586	1.347	1.069	110-120	1.009	282.6	98.6,98.6
130	0.7567	1.193	1.672	1.040	0.6957	0.9825	1.350	1.133	120-130	0.9284	283.5	99,99
140	0.8958	1.448	1.792	1.250	0.8277	1.201	1.633	1.420	130-140	0.9544	284.5	99.3,99.3
150	1.025	1.595	1.768	1.327	0.9598	1.308	1.681	1.537	140-150	0.8547	285.3	99.6,99.6
160	1.148	1.502	1.650	1.296	1.099	1.298	1.625	1.472	150-160	0.6463	286.0	99.8,99.8
170	1.271	1.497	1.402	1.396	1.243	1.281	1.283	1.291	160-170	0.3857	286.3	100,100
180	1.363	1.331	1.321	1.339	1.365	1.338	1.323	1.339	170-180	0.1287	286.5	100,100
DEG	LUMINOUS INTENSITY:cd									UNIT:lm		

Conical surface Flux(90deg): 153.91 lm

%lum = 53.7%

%lamp = 53.7%

Conical surface Flux(120deg): 217.78 lm

%lum = 76.0%

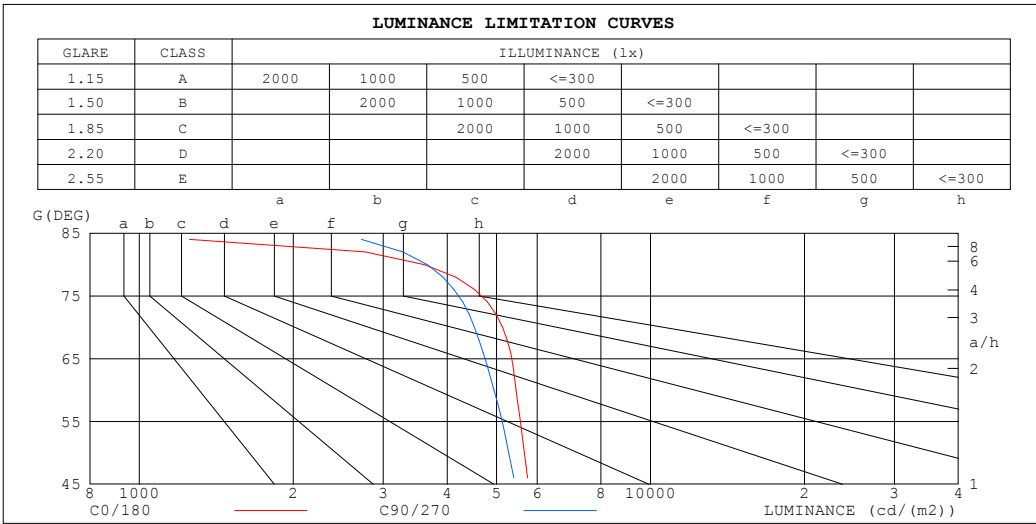
%lamp = 76.0%

C Range: 0 - 360DEG
 C Interval: 22.5DEG
 Test Speed: HIGH
 Temperature:25.3DEG
 Operators:
 Test Date:2024-04-02

γ Range: 0 - 180DEG
 γ Interval: 2.0DEG
 Test System:EVERFINE GO-2000B_V1 SYSTEM V2.00.450
 Humidity:65.0%
 Test Distance:5.749m [K=1.0000]
 Remarks:

LUMINANCE LIMITATION CURVES

NAME: HFP1615TB.5.4K	TYPE:	WEIGHT:
SPEC.:	DIM.:	SERIAL No.:
MFR.: HELIFLEX	SUR.: 0.016*1	Shielding Angle:



LUMINANCE cd/(m2)		
G (DEG)	C0/180	C90/270
85	1503	3263
80	3615	3659
75	5110	4574
70	5133	4523
65	5576	4966
60	5458	4939
55	5722	5284
50	5665	5279
45	5881	5552

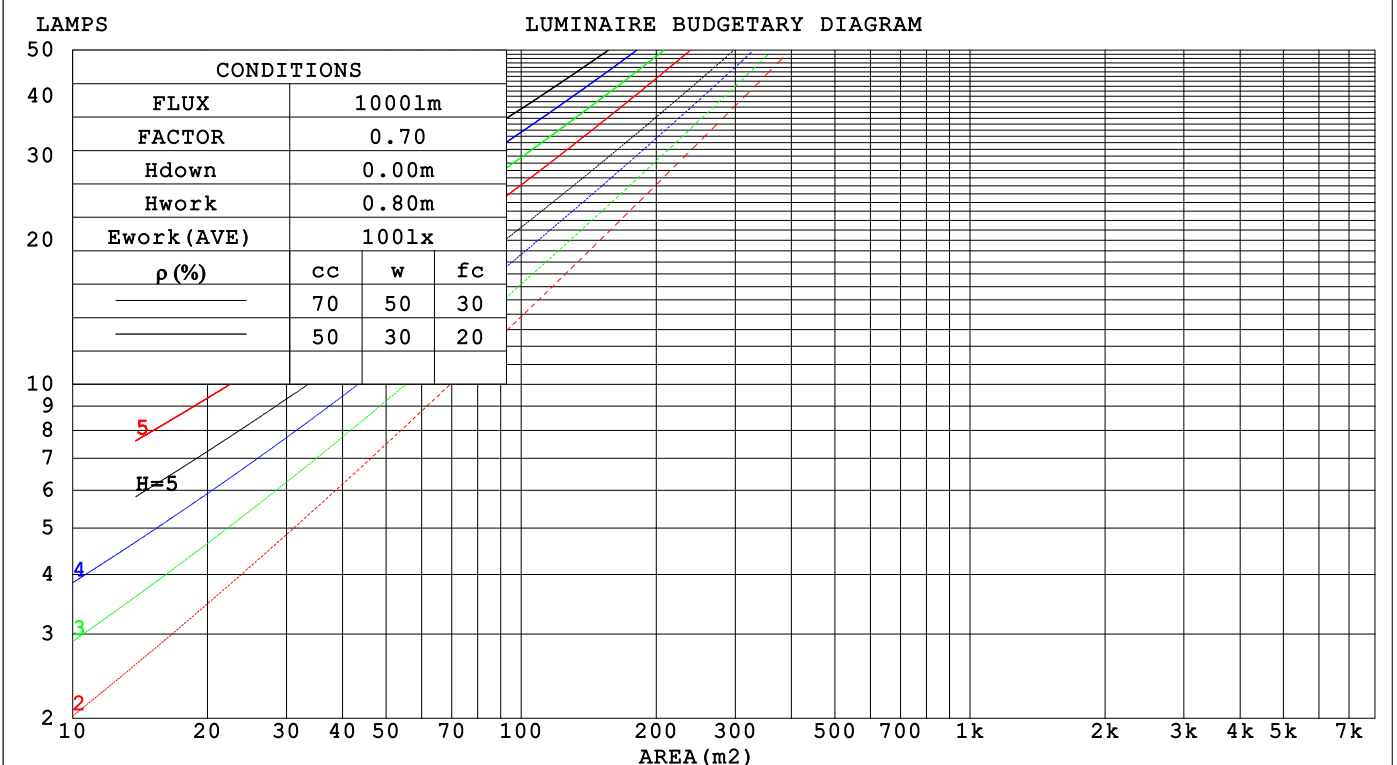
C Range: 0 - 360DEG
 C Interval: 22.5DEG
 Test Speed: HIGH
 Temperature: 25.3DEG
 Operators:
 Test Date: 2024-04-02

γ Range: 0 - 180DEG
 γ Interval: 2.0DEG
 Test System: EVERFINE GO-2000B_V1 SYSTEM V2.00.450
 Humidity: 65.0%
 Test Distance: 5.749m [K=1.0000]
 Remarks:

CU AND LUMINAIRE BUDGETARY ESTIMATE DIAGRAM

NAME: HFP1615TB.5.4K	TYPE:	WEIGHT:
SPEC.:	DIM.:	SERIAL No.:
MFR.:HELIFLEX	SUR.: 0.016*1	Shielding Angle:

ρcc	80%			70%			50%			30%			10%			0
ρw	50%	30%	10%	50%	30%	10%	50%	30%	10%	50%	30%	10%	50%	30%	10%	0
ρfc	20%			20%			20%			20%			20%			0
RCR	RCR:Room Cavity Ratio						Coefficients of Utilization(CU)									
0.0	1.18	1.18	1.18	1.15	1.15	1.15	1.10	1.10	1.10	1.05	1.05	1.05	.00	.00	.00	.98
1.0	1.03	.99	.95	1.01	.97	.93	.96	.93	.90	.92	.89	.86	.88	.85	.83	.81
2.0	.90	.83	.77	.88	.81	.76	.84	.78	.74	.80	.76	.72	.77	.73	.70	.67
3.0	.79	.70	.64	.77	.69	.63	.74	.67	.62	.70	.65	.60	.68	.63	.59	.57
4.0	.70	.61	.54	.68	.60	.53	.65	.58	.52	.63	.56	.51	.60	.55	.51	.48
5.0	.62	.53	.46	.61	.52	.46	.58	.51	.45	.56	.50	.45	.54	.48	.44	.42
6.0	.56	.47	.41	.55	.46	.40	.53	.45	.40	.51	.44	.39	.49	.43	.39	.36
7.0	.51	.42	.36	.50	.41	.36	.48	.41	.35	.46	.40	.35	.45	.39	.34	.32
8.0	.46	.38	.32	.45	.37	.32	.44	.37	.31	.42	.36	.31	.41	.35	.31	.29
9.0	.42	.34	.29	.42	.34	.29	.40	.33	.28	.39	.33	.28	.38	.32	.28	.26
10.0	.39	.31	.26	.39	.31	.26	.37	.30	.26	.36	.30	.25	.35	.29	.25	.23



C Range: 0 - 360DEG
 C Interval: 22.5DEG
 Test Speed: HIGH
 Temperature:25.3DEG
 Operators:
 Test Date:2024-04-02

γ Range: 0 - 180DEG
 γ Interval: 2.0DEG
 Test System:EVERFINE GO-2000B_V1 SYSTEM V2.00.450
 Humidity:65.0%
 Test Distance:5.749m [K=1.0000]
 Remarks:

WEC AND CCEC

NAME: HFP1615TB.5.4K	TYPE:	WEIGHT:
SPEC.:	DIM.:	SERIAL No.:
MFR.:HELIFLEX	SUR.: 0.016*1	Shielding Angle:

ρ_{CC}	80%			70%			50%			30%			10%			0
ρ_w	50%	30%	10%	50%	30%	10%	50%	30%	10%	50%	30%	10%	50%	30%	10%	0
ρ_{fc}	20%			20%			20%			20%			20%			0
RCR	RCR:Room Cavity Ratio						Wall Exitance Coefficients (WEC)									
0.0																
1.0	.314	.178	.056	.306	.174	.055	.291	.167	.053	.277	.160	.051	.265	.154	.050	
2.0	.293	.161	.049	.286	.158	.049	.273	.152	.047	.261	.147	.046	.250	.142	.045	
3.0	.271	.144	.043	.265	.142	.043	.253	.137	.042	.242	.133	.041	.232	.129	.040	
4.0	.249	.130	.038	.244	.128	.038	.234	.124	.037	.224	.120	.036	.215	.117	.036	
5.0	.230	.117	.034	.225	.116	.034	.216	.113	.033	.208	.110	.033	.200	.107	.032	
6.0	.213	.107	.031	.209	.106	.030	.201	.103	.030	.193	.100	.029	.186	.098	.029	
7.0	.198	.098	.028	.194	.097	.028	.187	.095	.027	.180	.092	.027	.174	.090	.027	
8.0	.185	.091	.025	.182	.089	.025	.175	.087	.025	.169	.085	.025	.163	.084	.024	
9.0	.174	.084	.023	.170	.083	.023	.164	.081	.023	.159	.080	.023	.153	.078	.022	
10.0	.163	.078	.022	.160	.077	.022	.155	.076	.021	.150	.074	.021	.145	.073	.021	

ρ_{CC}	80%			70%			50%			30%			10%			0
ρ_w	50%	30%	10%	50%	30%	10%	50%	30%	10%	50%	30%	10%	50%	30%	10%	0
ρ_{fc}	20%			20%			20%			20%			20%			0
RCR	RCR:Room Cavity Ratio						Ceiling Cavity Exitance Coefficients (CCEC)									
0.0	.209	.209	.209	.179	.179	.179	.122	.122	.122	.070	.070	.070	.022	.022	.022	
1.0	.200	.175	.153	.171	.150	.132	.117	.103	.091	.067	.060	.053	.022	.019	.017	
2.0	.192	.151	.117	.164	.130	.101	.113	.090	.071	.065	.052	.041	.021	.017	.013	
3.0	.184	.134	.094	.158	.115	.081	.108	.080	.057	.063	.047	.034	.020	.015	.011	
4.0	.176	.120	.078	.151	.104	.068	.104	.073	.048	.060	.042	.028	.019	.014	.009	
5.0	.169	.110	.067	.145	.095	.058	.100	.067	.041	.058	.039	.024	.019	.013	.008	
6.0	.162	.102	.059	.139	.088	.051	.096	.062	.036	.056	.036	.022	.018	.012	.007	
7.0	.155	.095	.053	.133	.082	.046	.092	.058	.033	.053	.034	.019	.017	.011	.006	
8.0	.148	.089	.048	.128	.077	.042	.088	.054	.030	.051	.032	.018	.017	.011	.006	
9.0	.142	.084	.045	.123	.073	.039	.085	.051	.028	.050	.030	.017	.016	.010	.006	
10.0	.137	.080	.042	.118	.069	.037	.082	.049	.026	.048	.029	.016	.015	.009	.005	

C Range: 0 - 360DEG
 C Interval: 22.5DEG
 Test Speed: HIGH
 Temperature:25.3DEG
 Operators:
 Test Date:2024-04-02

γ Range: 0 - 180DEG
 γ Interval: 2.0DEG
 Test System:EVERFINE GO-2000B_V1 SYSTEM V2.00.450
 Humidity:65.0%
 Test Distance:5.749m [K=1.0000]
 Remarks:

UGR(Unified Glare Rating) Table

NAME: HFP1615TB.5.4K		TYPE:					WEIGHT:				
SPEC.:		DIM.:					SERIAL No.:				
MFR.:HELIFLEX		SUR.: 0.016*1					Shielding Angle:				
ceiling/cavity		0.7	0.7	0.5	0.5	0.3	0.7	0.7	0.5	0.5	0.3
walls		0.5	0.3	0.5	0.3	0.3	0.5	0.3	0.5	0.3	0.3
working plane		0.2	0.2	0.2	0.2	0.2	0.2	0.2	0.2	0.2	0.2
Room dimensions		Viewed crosswise					Viewed endwise				
x = 2H y = 2H		22.9	24.4	23.2	24.7	24.9	22.5	24.0	22.9	24.3	24.5
	3H	24.6	25.9	24.9	26.2	26.5	24.0	25.4	24.4	25.7	26.0
	4H	25.2	26.5	25.6	26.8	27.1	24.6	25.9	25.0	26.2	26.5
	6H	25.6	26.8	26.0	27.2	27.5	25.0	26.3	25.4	26.6	26.9
	8H	25.7	26.9	26.0	27.2	27.5	25.1	26.3	25.5	26.6	27.0
	12H	25.6	26.8	26.0	27.1	27.5	25.1	26.3	25.5	26.6	27.0
	4H 2H	23.5	24.8	23.8	25.1	25.4	23.2	24.5	23.5	24.8	25.1
	3H	25.3	26.4	25.7	26.8	27.1	24.8	26.0	25.2	26.3	26.7
	4H	26.1	27.1	26.5	27.5	27.9	25.5	26.6	26.0	27.0	27.3
	6H	26.6	27.6	27.1	28.0	28.4	26.1	27.0	26.5	27.4	27.8
	8H	26.7	27.6	27.2	28.0	28.5	26.2	27.1	26.7	27.5	27.9
	12H	26.7	27.5	27.2	27.9	28.4	26.2	27.0	26.7	27.5	27.9
	8H 4H	26.3	27.2	26.7	27.6	28.0	25.8	26.7	26.3	27.1	27.5
	6H	27.0	27.7	27.5	28.2	28.7	26.5	27.2	27.0	27.6	28.1
	8H	27.2	27.9	27.7	28.3	28.8	26.7	27.3	27.2	27.8	28.3
	12H	27.3	27.8	27.8	28.3	28.8	26.8	27.3	27.3	27.8	28.3
	12H 4H	26.3	27.1	26.8	27.5	28.0	25.8	26.6	26.3	27.1	27.5
	6H	27.0	27.7	27.5	28.2	28.7	26.5	27.2	27.0	27.6	28.1
	8H	27.3	27.8	27.8	28.3	28.9	26.8	27.3	27.3	27.8	28.3
Variations with the observer position at spacings(CIE Pub.117):											
S = 1.0H		+ 0.1 / - 0.2					+ 0.2 / - 0.2				
1.5H		+ 0.1 / - 0.2					+ 0.2 / - 0.3				
2.0H		+ 0.2 / - 0.2					+ 0.2 / - 0.3				

CIE Pub.117, 286.5 lm Total Lamp Luminous Flux Correct (8log(F/F0) = -4.3)
 Area: 0.016 m2

C Range: 0 - 360DEG
 C Interval: 22.5DEG
 Test Speed: HIGH
 Temperature:25.3DEG
 Operators:
 Test Date:2024-04-02

γ Range: 0 - 180DEG
 γ Interval: 2.0DEG
 Test System:EVERFINE GO-2000B_V1 SYSTEM V2.00.450
 Humidity:65.0%
 Test Distance:5.749m [K=1.0000]
 Remarks:

UTILIZATION FACTORS TABLE

NAME: HFP1615TB.5.4K	TYPE:	WEIGHT:
SPEC.:	DIM.:	SERIAL No.:
MFR.:HELIFLEX	SUR.: 0.016*1	Shielding Angle:

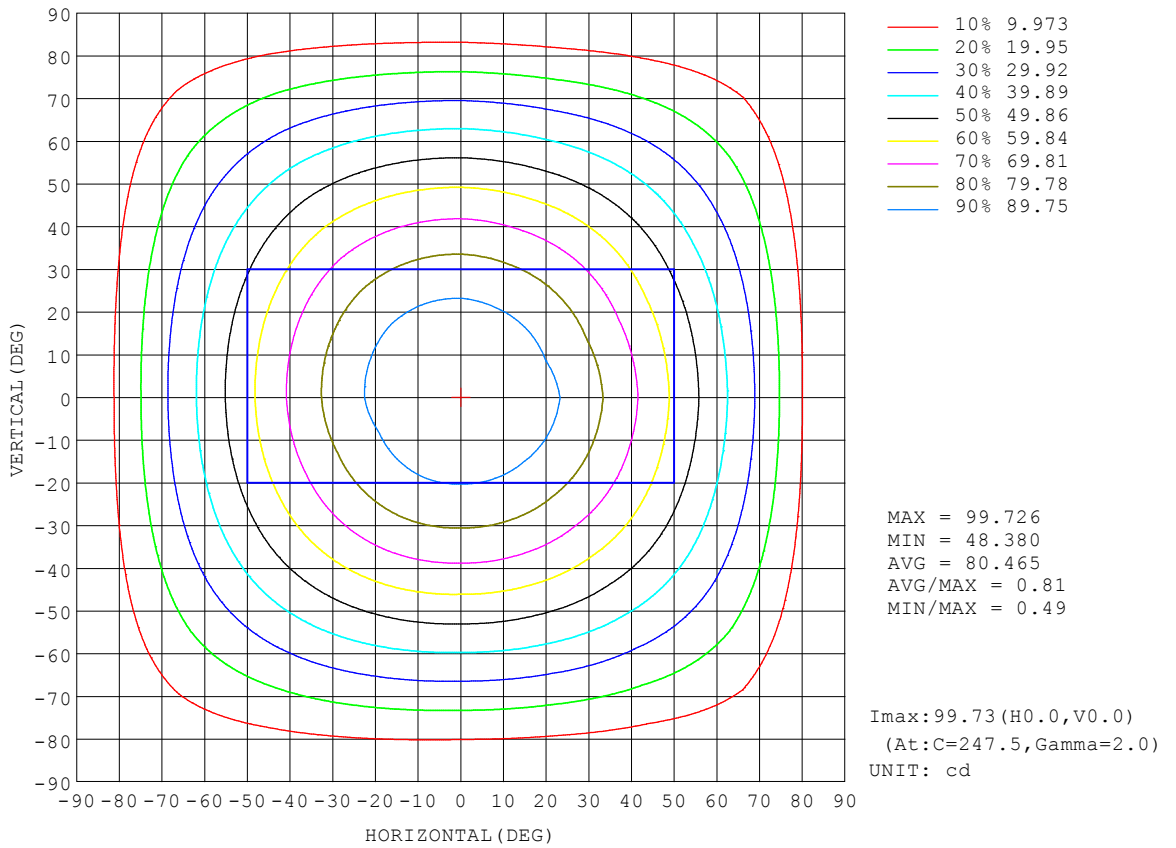
REFLECTANCE										
Ceiling	0.8	0.8	0.8	0.7	0.7	0.7	0.5	0.5	0.5	0
Walls	0.7	0.5	0.3	0.7	0.5	0.3	0.7	0.5	0.3	0
Working plane	0.2	0.2	0.2	0.2	0.2	0.2	0.2	0.2	0.2	0
ROOM INDEX	UTILIZATION FACTORS (PERCENT) $k(RI) \times RCR = 5$									
$k = 0.60$	57	45	38	56	45	38	55	44	38	31
0.80	67	55	48	66	55	47	64	54	47	40
1.00	75	64	56	74	63	56	71	64	55	48
1.25	82	71	64	80	71	64	77	69	63	55
1.50	87	77	70	85	76	69	82	74	68	60
2.00	94	85	79	92	84	78	88	81	76	68
2.50	98	90	84	96	88	83	91	85	81	72
3.00	101	94	89	99	92	87	94	89	85	76
4.00	105	99	95	103	97	93	98	94	90	80
5.00	108	103	99	105	101	97	100	97	93	83
ROOM INDEX	UF(total)									Direct
According to DIN EN 13032-2 2004			Suspended				SHRNOM = 1.25			

C Range: 0 - 360DEG
 C Interval: 22.5DEG
 Test Speed: HIGH
 Temperature:25.3DEG
 Operators:
 Test Date:2024-04-02

γ Range: 0 - 180DEG
 γ Interval: 2.0DEG
 Test System:EVERFINE GO-2000B_V1 SYSTEM V2.00.450
 Humidity:65.0%
 Test Distance:5.749m [K=1.0000]
 Remarks:

ISOCANDELA DIAGRAM

NAME: HFP1615TB.5.4K	TYPE:	WEIGHT:
SPEC.:	DIM.:	SERIAL No.:
MFR.:HELIFLEX	SUR.: 0.016*1	Shielding Angle:

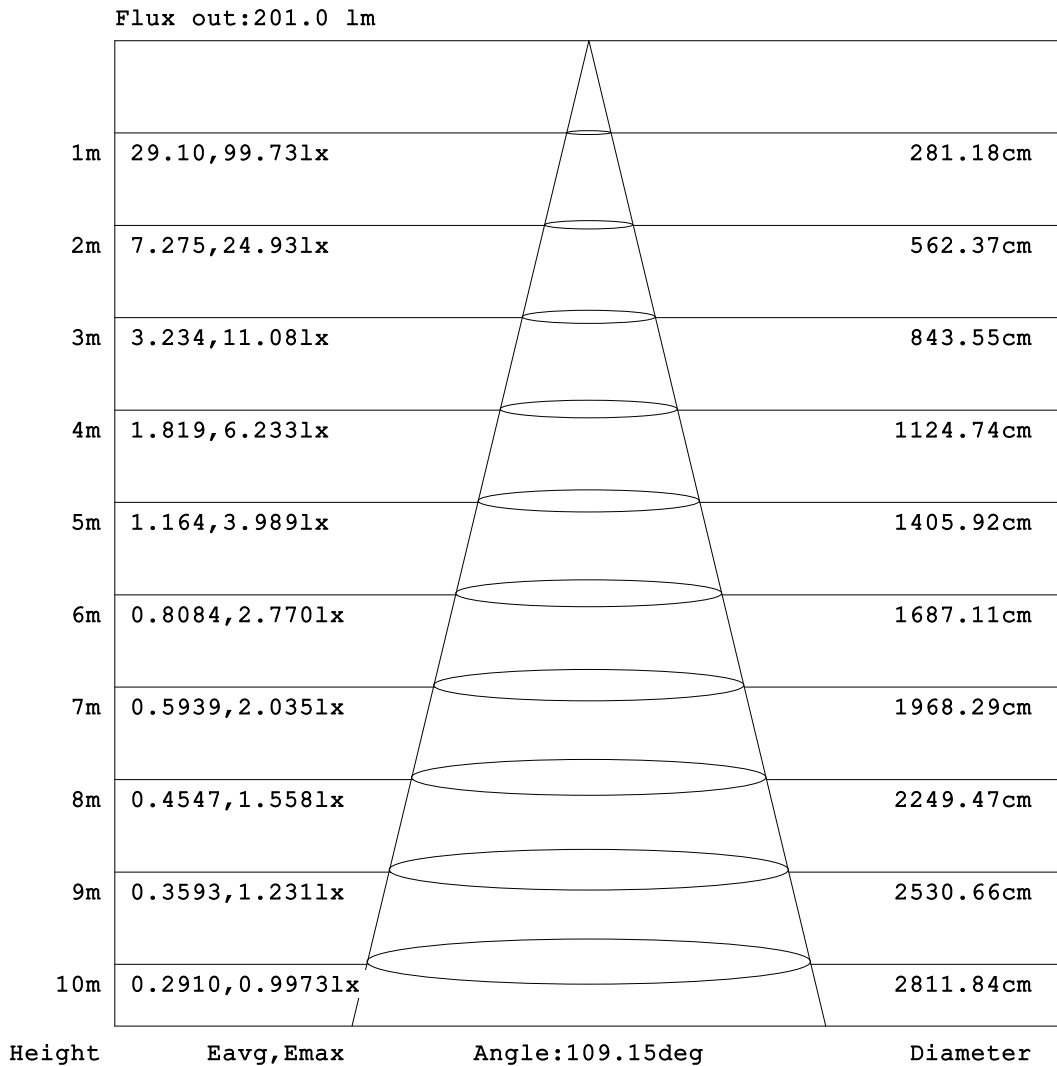


C Range: 0 - 360DEG
 C Interval: 22.5DEG
 Test Speed: HIGH
 Temperature:25.3DEG
 Operators:
 Test Date:2024-04-02

γ Range: 0 - 180DEG
 γ Interval: 2.0DEG
 Test System:EVERFINE GO-2000B_V1 SYSTEM V2.00.450
 Humidity:65.0%
 Test Distance:5.749m [K=1.0000]
 Remarks:

AAI Figure

NAME: HFP1615TB.5.4K	TYPE:	WEIGHT:
SPEC.:	DIM.:	SERIAL No.:
MFR.:HELIFLEX	SUR.: 0.016*1	Shielding Angle:



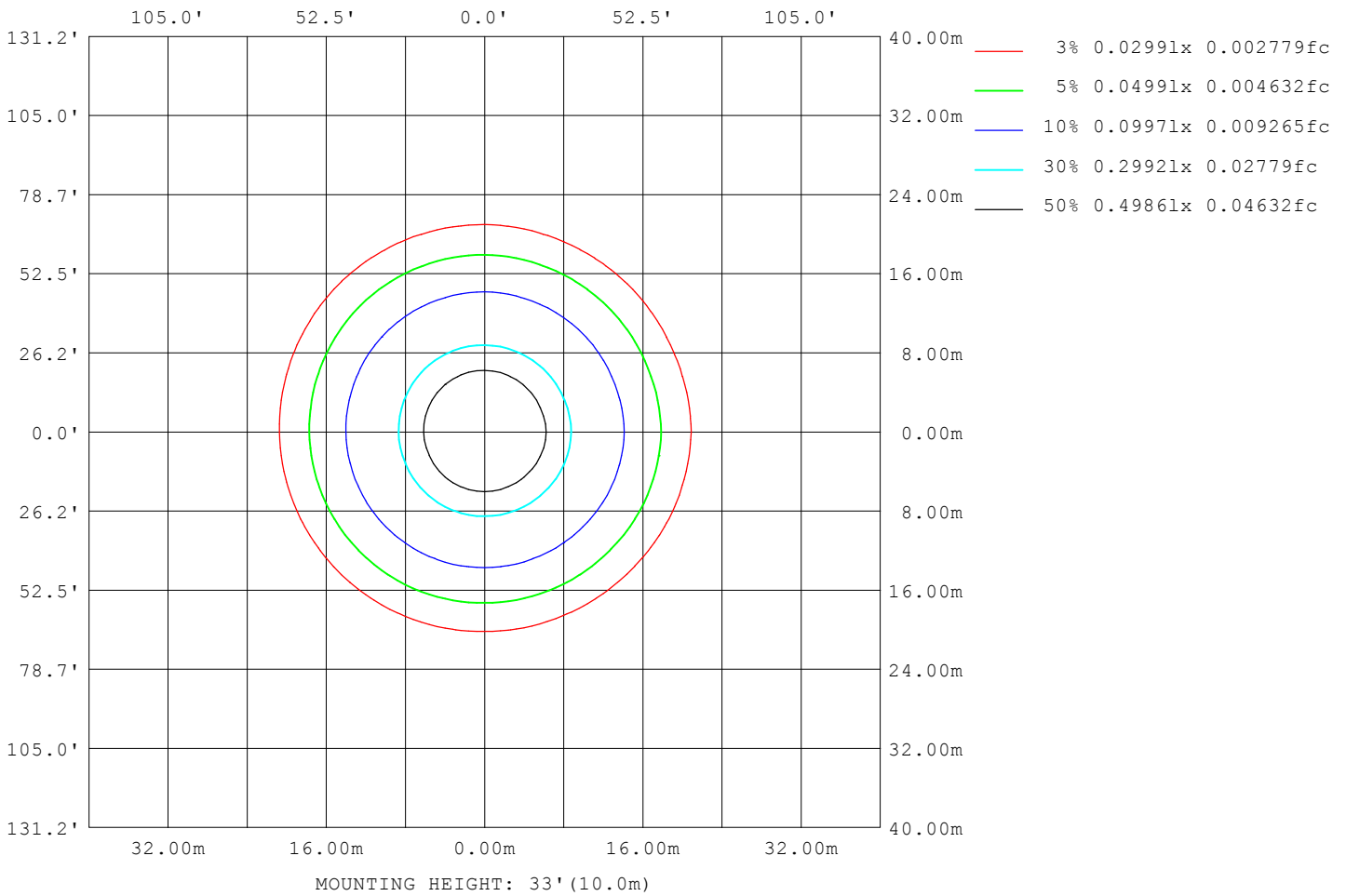
Note: The Curves indicate the illuminated area and the average illumination when the luminaire is at different distance.

C Range: 0 - 360DEG
 C Interval: 22.5DEG
 Test Speed: HIGH
 Temperature: 25.3DEG
 Operators:
 Test Date: 2024-04-02

γ Range: 0 - 180DEG
 γ Interval: 2.0DEG
 Test System: EVERFINE GO-2000B_V1 SYSTEM V2.00.450
 Humidity: 65.0%
 Test Distance: 5.749m [K=1.0000]
 Remarks:

ISOLUX DIAGRAM

NAME: HFP1615TB.5.4K	TYPE:	WEIGHT:
SPEC.:	DIM.:	SERIAL No.:
MFR.: HELIFLEX	SUR.: 0.016*1	Shielding Angle:



C Range: 0 - 360DEG
 C Interval: 22.5DEG
 Test Speed: HIGH
 Temperature: 25.3DEG
 Operators:
 Test Date: 2024-04-02

γ Range: 0 - 180DEG
 γ Interval: 2.0DEG
 Test System: EVERFINE GO-2000B_V1 SYSTEM V2.00.450
 Humidity: 65.0%
 Test Distance: 5.749m [K=1.0000]
 Remarks:

LED Avg.L Report

NAME: HFP1615TB.5.4K	TYPE:	WEIGHT:
SPEC.:	DIM.:	SERIAL No.:
MFR.:HELIFLEX	SUR.: 0.016*1	Shielding Angle:

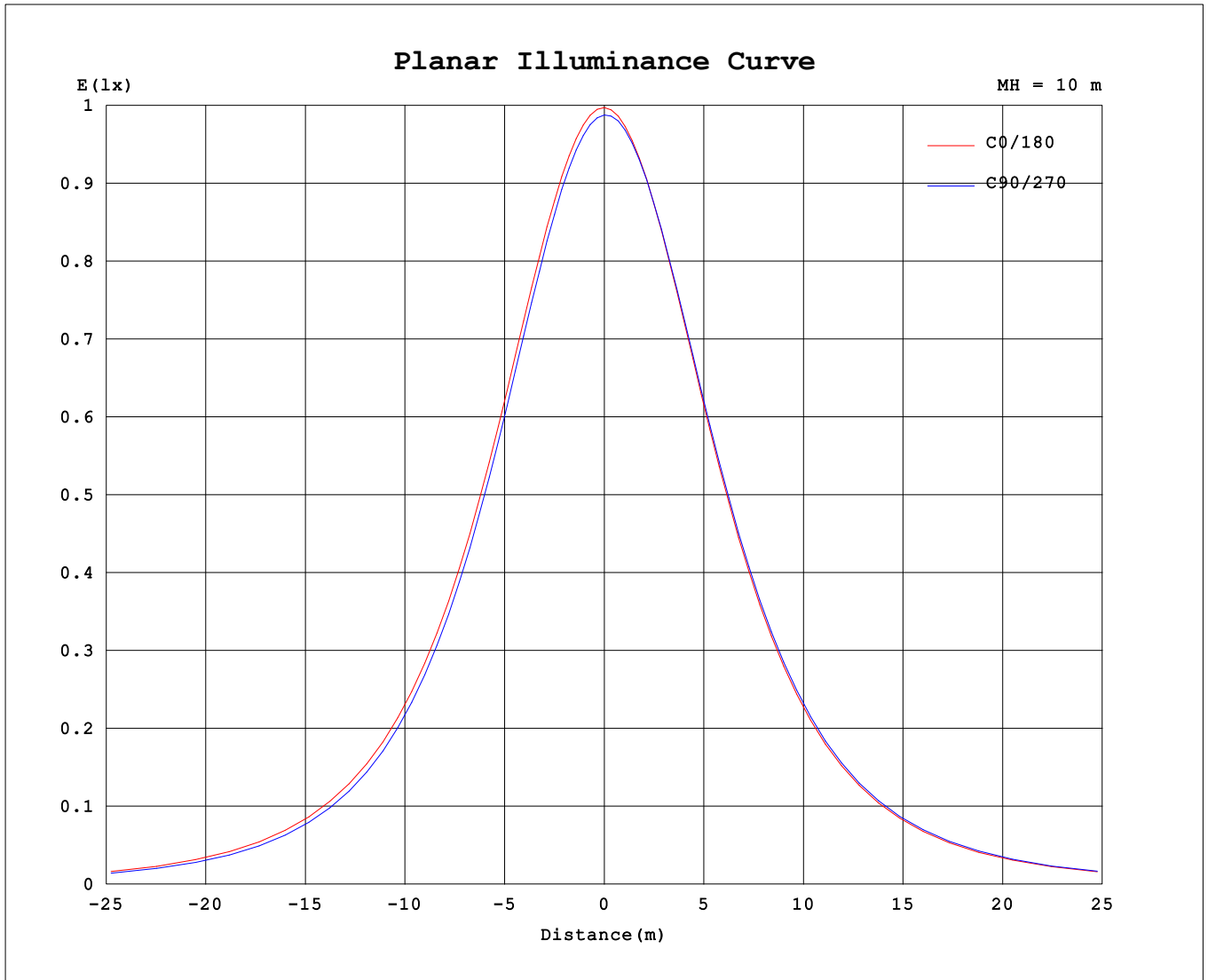
AvgL	cd/m2
L_0~180 (65) av	5247
L_0~180 (75) av	4688
L_0~180 (85) av	1866
L_90~270 (65) av	5092
L_90~270 (75) av	4744
L_90~270 (85) av	3838
L_45 (65) av	5148
L_45 (75) av	4789
L_45 (85) av	3774

Standard: GB/T 29293-2012

C Range: 0 - 360DEG
 C Interval: 22.5DEG
 Test Speed: HIGH
 Temperature:25.3DEG
 Operators:
 Test Date:2024-04-02

γ Range: 0 - 180DEG
 γ Interval: 2.0DEG
 Test System:EVERFINE GO-2000B_V1 SYSTEM V2.00.450
 Humidity:65.0%
 Test Distance:5.749m [K=1.0000]
 Remarks:

Planar Illuminance Curve



C Range: 0 - 360DEG
 C Interval: 22.5DEG
 Test Speed: HIGH
 Temperature: 25.3DEG
 Operators:
 Test Date: 2024-04-02

γ Range: 0 - 180DEG
 γ Interval: 2.0DEG
 Test System: EVERFINE GO-2000B_V1 SYSTEM V2.00.450
 Humidity: 65.0%
 Test Distance: 5.749m [K=1.0000]
 Remarks:

LUMINOUS DISTRIBUTION INTENSITY DATA

NAME: HFP1615TB.5.4K	TYPE:	WEIGHT:
SPEC.:	DIM.:	SERIAL No.:
MFR.:HELIFLEX	SUR.: 0.016*1	Shielding Angle:

Table--1

UNIT: cd

C (DEG) \ γ (DEG)	0	22.5	45	67.5	90	112.5	135	157.5	180	202.5	225	247.5	270	292.5	315	337.5			
0	98.9	98.9	98.9	98.9	98.9	98.9	98.9	98.9	98.9	98.9	98.9	98.9	98.9	98.9	98.9	98.9			
5	98.6	98.5	98.4	98.3	98.3	98.4	98.5	98.5	98.5	98.6	98.8	98.8	98.8	98.7	98.7	98.6			
10	97.1	96.8	96.5	96.4	96.4	96.6	96.7	96.8	96.8	97.1	97.5	97.5	97.5	97.3	97.2	97.1			
15	95.3	94.9	94.4	94.3	94.3	94.6	94.7	94.9	94.9	95.3	95.8	95.9	95.8	95.6	95.5	95.4			
20	91.5	91.0	90.4	90.2	90.1	90.5	90.8	91.0	91.0	91.6	92.2	92.3	92.2	91.9	91.8	91.6			
25	88.4	87.8	87.0	86.7	86.6	87.1	87.4	87.7	87.7	88.4	89.1	89.2	89.2	88.8	88.7	88.4			
30	82.7	81.9	81.0	80.6	80.5	81.1	81.5	81.9	81.9	82.7	83.5	83.7	83.6	83.1	83.0	82.7			
35	78.4	77.5	76.5	76.0	75.9	76.5	77.0	77.5	77.5	78.4	79.3	79.4	79.3	78.8	78.6	78.4			
40	71.2	70.2	69.0	68.5	68.3	69.0	69.6	70.2	70.3	71.2	72.1	72.2	72.2	71.6	71.4	71.2			
45	66.0	65.0	63.6	63.0	62.9	63.6	64.2	64.9	65.1	66.0	66.9	67.1	67.0	66.4	66.2	65.9			
50	57.8	56.6	55.1	54.5	54.3	55.1	55.8	56.6	56.8	57.8	58.7	58.8	58.7	58.1	57.9	57.6			
55	52.1	50.9	49.3	48.7	48.5	49.3	50.0	50.9	51.1	52.1	53.0	53.1	53.0	52.3	52.1	51.9			
60	43.3	42.0	40.4	39.7	39.5	40.4	41.2	42.1	42.4	43.4	44.2	44.3	44.3	43.5	43.2	43.1			
65	37.4	36.1	34.4	33.7	33.6	34.4	35.3	36.2	36.5	37.5	38.3	38.4	38.3	37.5	37.3	37.1			
70	27.9	27.1	25.3	24.7	24.8	25.5	26.3	27.4	27.5	28.7	29.4	29.3	29.2	28.3	28.2	28.1			
75	21.0	21.0	19.2	18.8	19.0	19.6	20.3	21.5	21.2	22.8	23.5	23.4	23.3	22.4	22.2	22.1			
80	9.96	12.1	10.3	10.0	10.2	10.9	11.5	12.7	11.8	14.0	14.6	14.6	14.5	13.6	13.3	13.2			
85	2.08	6.11	4.62	4.40	4.55	5.21	5.86	6.85	5.73	8.26	8.79	8.88	8.76	7.86	7.40	7.30			
90	0.10	0.27	1.10	1.70	1.92	1.68	1.09	0.28	0.09	0.43	1.21	1.60	1.70	1.46	1.02	0.34			
95	0.14	0.41	1.22	1.77	1.95	1.78	1.22	0.42	0.13	0.35	0.99	1.51	1.70	1.53	1.06	0.38			
100	0.24	0.59	1.27	1.75	1.90	1.76	1.31	0.62	0.21	0.46	1.09	1.57	1.74	1.56	1.13	0.50			
105	0.31	0.61	1.13	1.51	1.63	1.54	1.14	0.62	0.28	0.50	1.00	1.43	1.61	1.46	1.08	0.56			
110	0.42	0.71	1.13	1.40	1.48	1.41	1.08	0.70	0.38	0.62	1.04	1.28	1.40	1.35	1.14	0.68			
115	0.49	0.74	1.14	1.32	1.39	1.30	1.08	0.73	0.45	0.66	1.05	1.30	1.46	1.41	1.16	0.70			
120	0.60	0.79	1.03	1.29	1.35	1.29	0.97	0.74	0.55	0.72	0.96	1.21	1.35	1.29	1.07	0.78			
125	0.66	0.87	1.04	1.27	1.38	1.24	0.94	0.80	0.61	0.75	0.95	1.19	1.33	1.30	1.09	0.82			
130	0.76	1.00	1.19	1.54	1.67	1.44	1.04	0.89	0.70	0.85	0.98	1.21	1.35	1.31	1.13	0.93			
135	0.82	1.13	1.36	1.70	1.82	1.60	1.19	0.97	0.75	0.90	1.05	1.24	1.42	1.40	1.25	0.98			
140	0.90	1.21	1.45	1.69	1.79	1.53	1.25	1.08	0.83	1.00	1.20	1.39	1.63	1.66	1.42	1.11			
145	0.95	1.27	1.49	1.72	1.82	1.51	1.25	1.09	0.88	1.05	1.26	1.45	1.57	1.73	1.51	1.17			
150	1.03	1.33	1.59	1.69	1.77	1.47	1.33	1.16	0.96	1.09	1.31	1.48	1.68	1.71	1.54	1.18			
155	1.07	1.41	1.58	1.68	1.69	1.43	1.31	1.21	1.01	1.12	1.31	1.46	1.69	1.68	1.55	1.19			
160	1.15	1.40	1.50	1.63	1.65	1.39	1.30	1.32	1.10	1.17	1.30	1.39	1.63	1.62	1.47	1.19			
165	1.20	1.39	1.49	1.54	1.59	1.34	1.33	1.36	1.15	1.18	1.30	1.34	1.56	1.51	1.37	1.19			
170	1.27	1.40	1.50	1.57	1.40	1.36	1.40	1.38	1.24	1.21	1.28	1.27	1.28	1.34	1.29	1.24			
175	1.31	1.49	1.44	1.45	1.38	1.40	1.43	1.44	1.30	1.27	1.26	1.26	1.26	1.26	1.27	1.29			
180	1.36	1.35	1.33	1.32	1.32	1.31	1.34	1.36	1.37	1.35	1.34	1.32	1.32	1.31	1.34	1.36			

C Range: 0 - 360DEG
 C Interval: 22.5DEG
 Test Speed: HIGH
 Temperature:25.3DEG
 Operators:
 Test Date:2024-04-02

γ Range: 0 - 180DEG
 γ Interval: 2.0DEG
 Test System:EVERFINE GO-2000B_V1 SYSTEM V2.00.450
 Humidity:65.0%
 Test Distance:5.749m [K=1.0000]
 Remarks: