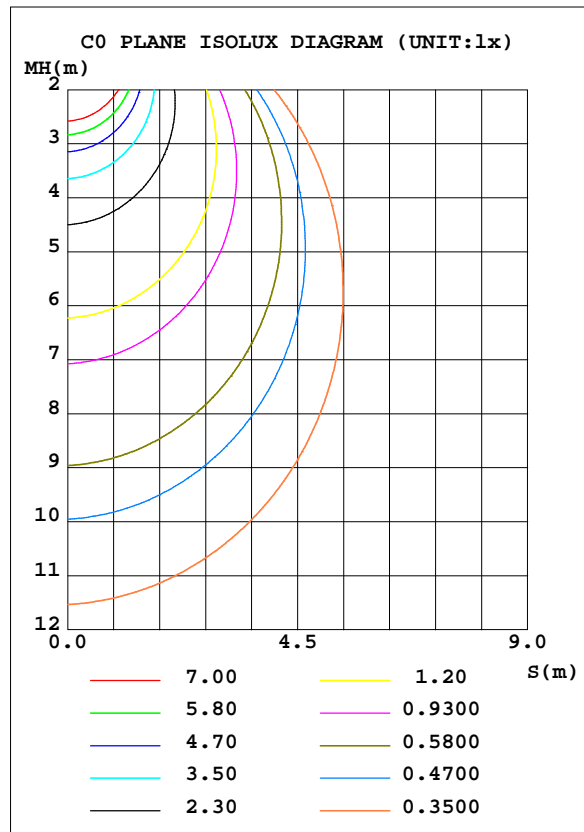
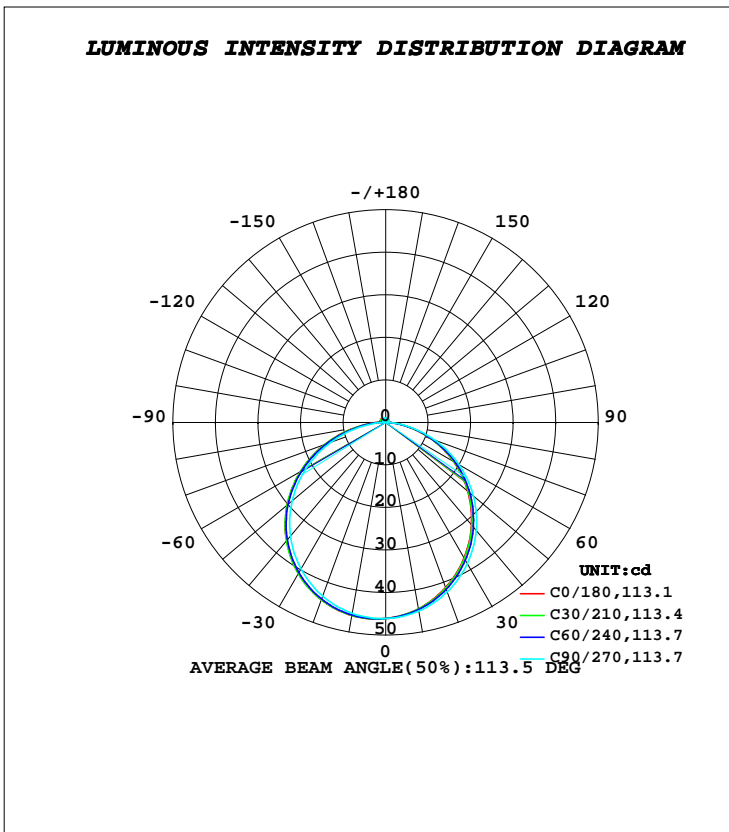


LUMINAIRE PHOTOMETRIC TEST REPORT

Test:U:24.000V I:0.3990A P:9.6000W PF:1.0000 Freq:0Hz		
Lamp Flux:139.824x1 lm		
NAME: HF0612SB.10.3K	TYPE: LED	
MFR.: HELIFLEX		

DATA OF LAMP		PHOTOMETRIC DATA			
MODEL		Imax(cd)	46.30	S/MH(C0/180)	1.20
NOMINAL POWER(W)	9.6	LOR(%)	100.0	S/MH(C90/270)	1.24
RATED VOLTAGE(V)	24	TOTAL FLUX(lm)	139.82	η UP, DN(C0-180)	1.7,46.5
NOMINAL FLUX(lm)	139.824	CIE CLASS	DIRECT	η UP, DN(C180-360)	2.0,49.8
LAMPS INSIDE	1	η up(%)	3.8	CIBSE SHR NOM	1.25
TEST VOLTAGE(V)	24	η down(%)	96.2	CIBSE SHR MAX	1.35



C Range: 0 - 360DEG
C Interval: 30.0DEG
Test Speed: HIGH
Temperature:25.3DEG
Operators:DAMIN
Test Date:2021-08-28

γ Range: 0 - 180DEG
γ Interval: 1.0DEG
Test System:EVERFINE GO-2000A_V1 SYSTEM V2.00.443
Humidity:65.0%
Test Distance:8.000m [K=0.7063]
Remarks:

ZONAL FLUX DIAGRAM

ZONAL FLUX DIAGRAM:

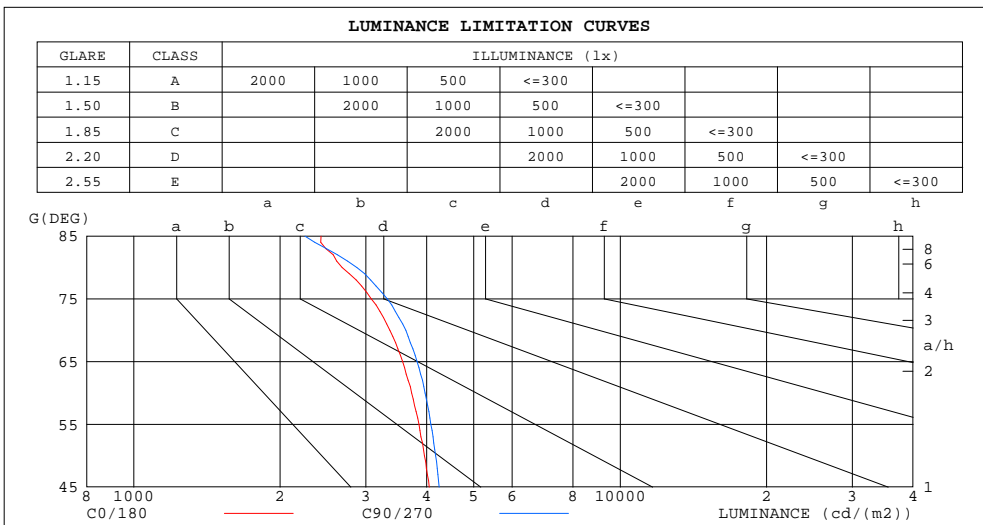
γ	C0	C45	C90	C135	C180	C225	C270	C315	γ	Φ zone	Φ total	%lum,lamp
10	44.46	44.57	45.00	45.60	46.06	45.99	45.54	44.93	0- 10	4.361	4.361	3.12,3.12
20	41.29	41.54	42.37	43.51	44.35	44.26	43.43	42.25	10- 20	12.49	16.85	12.1,12.1
30	36.84	37.22	38.35	39.89	41.03	40.93	39.82	38.19	20- 30	18.95	35.81	25.6,25.6
40	31.39	31.82	33.16	34.93	36.26	36.14	34.84	32.95	30- 40	22.92	58.73	42,42
50	25.20	25.62	26.95	28.81	30.32	30.14	28.71	26.84	40- 50	23.91	82.64	59.1,59.1
60	18.45	18.77	19.94	21.73	23.18	22.97	21.60	19.89	50- 60	21.81	104.4	74.7,74.7
70	11.39	11.60	12.45	14.04	15.35	15.08	13.81	12.51	60- 70	16.91	121.4	86.8,86.8
80	4.609	4.647	5.014	6.295	7.479	7.025	5.821	5.221	70- 80	9.984	131.3	93.9,93.9
90	0.7202	0.6249	0.3681	1.352	2.121	1.541	0.5332	0.6673	80- 90	3.219	134.6	96.2,96.2
100	0.4845	0.4950	0.4300	0.9660	1.293	1.007	0.4735	0.5409	90-100	0.8343	135.4	96.8,96.8
110	0.5632	0.5634	0.5304	1.017	1.323	1.044	0.5533	0.6023	100-110	0.7988	136.2	97.4,97.4
120	0.6524	0.6488	0.6243	0.9891	1.341	1.028	0.6456	0.6859	110-120	0.8025	137.0	98,98
130	0.7450	0.7348	0.7190	0.9309	1.311	0.9611	0.7370	0.7704	120-130	0.7607	137.8	98.5,98.5
140	0.8278	0.8150	0.8162	0.8987	1.081	0.9096	0.8300	0.8581	130-140	0.6718	138.4	99,99
150	0.9058	0.9017	0.9142	0.9293	0.9391	0.9255	0.9149	0.9298	140-150	0.5616	139.0	99.4,99.4
160	0.9918	0.9909	1.011	0.9998	0.9830	0.9831	0.9964	1.003	150-160	0.4424	139.4	99.7,99.7
170	1.055	1.062	1.083	1.072	1.052	1.047	1.071	1.070	160-170	0.2913	139.7	99.9,99.9
180	1.073	1.090	1.106	1.102	1.084	1.083	1.106	1.101	170-180	0.1028	139.8	100,100
DEG	LUMINOUS INTENSITY:cd									UNIT:lm		

C Range: 0 - 360DEG
C Interval: 30.0DEG
Test Speed: HIGH
Temperature:25.3DEG
Operators:DAMIN
Test Date:2021-08-28

γ Range: 0 - 180DEG
 γ Interval: 1.0DEG
Test System:EVERFINE GO-2000A_V1 SYSTEM V2.00.443
Humidity:65.0%
Test Distance:8.000m [K=0.7063]
Remarks:

LUMINANCE LIMITATION CURVES

Test:U:24.000V I:0.3990A P:9.6000W PF:1.0000 Freq:0Hz		
Lamp Flux:139.824x1 lm		
NAME: HF0612SB.10.3K	TYPE: LED	
MFR.: HELIFLEX		



LUMINANCE cd/(m2)		
G (DEG)	C0/180	C90/270
85	2426	2252
80	2681	2875
75	3080	3322
70	3364	3625
65	3571	3824
60	3728	3970
55	3856	4084
50	3961	4175
45	4052	4248

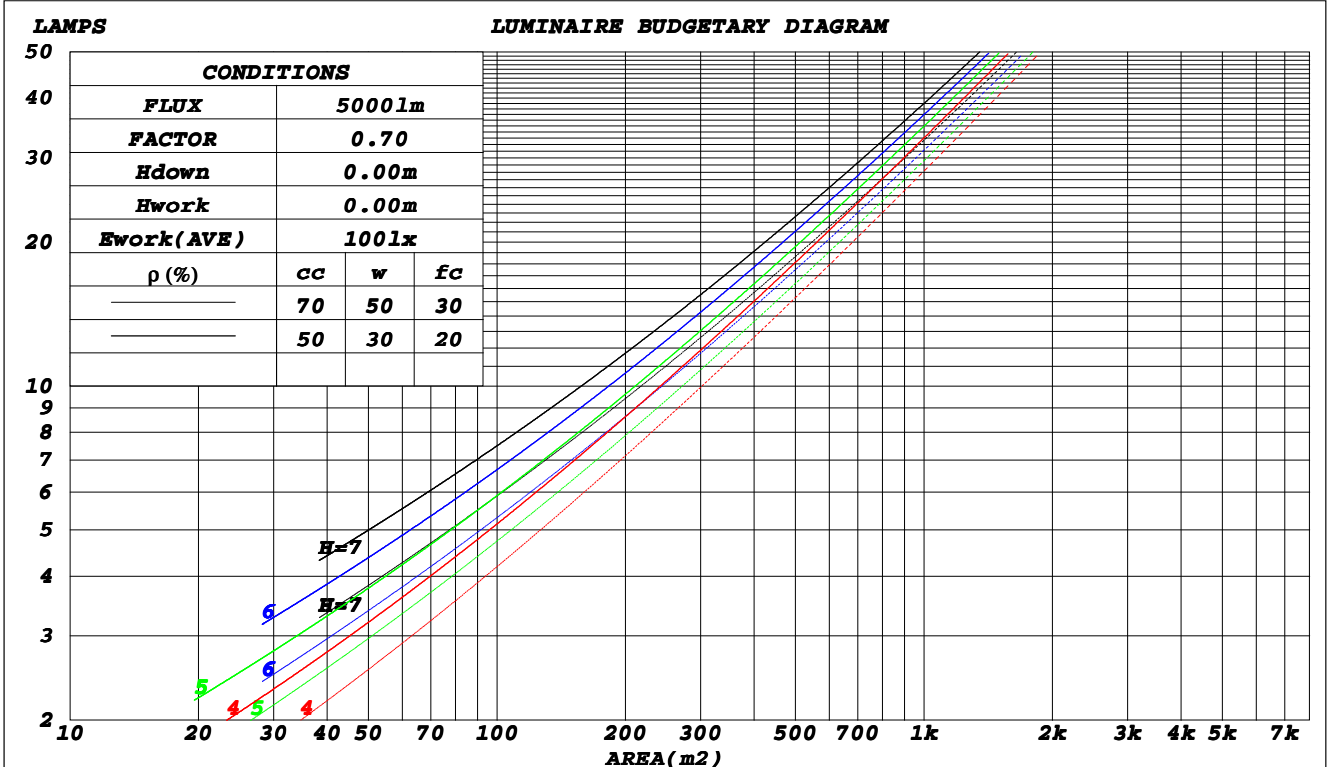
C Range: 0 - 360DEG
C Interval: 30.0DEG
Test Speed: HIGH
Temperature: 25.3DEG
Operators: DAMIN
Test Date: 2021-08-28

γ Range: 0 - 180DEG
γ Interval: 1.0DEG
Test System: EVERFINE GO-2000A_V1 SYSTEM V2.00.443
Humidity: 65.0%
Test Distance: 8.000m [K=0.7063]
Remarks:

CU AND LUMINAIRE BUDGETARY ESTIMATE DIAGRAM

Test:U:24.000V I:0.3990A P:9.6000W PF:1.0000 Freq:0Hz		
Lamp Flux:139.824x1 lm		
NAME: HF0612SB.10.3K	TYPE: LED	
MFR.: HELIFLEX		

ρ_{cc}	80%			70%			50%			30%			10%			0
ρ_w	50%	30%	10%	50%	30%	10%	50%	30%	10%	50%	30%	10%	50%	30%	10%	0
ρ_{fc}	20%			20%			20%			20%			20%			0
RCR	RCR:Room Cavity Ratio															
	Coefficients of Utilization(CU)															
0.0	1.18	1.18	1.18	1.15	1.15	1.15	1.09	1.09	1.09	1.04	1.04	1.04	.99	.99	.99	.96
1.0	1.03	.98	.94	1.00	.96	.92	.95	.92	.89	.91	.88	.85	.86	.84	.82	.80
2.0	.89	.82	.76	.87	.81	.75	.83	.77	.73	.79	.75	.71	.75	.72	.69	.66
3.0	.78	.70	.63	.76	.69	.62	.73	.66	.61	.69	.64	.59	.66	.62	.58	.55
4.0	.69	.60	.53	.68	.59	.53	.65	.57	.52	.62	.56	.51	.59	.54	.50	.47
5.0	.62	.53	.46	.60	.52	.45	.58	.50	.45	.55	.49	.44	.53	.48	.43	.41
6.0	.55	.46	.40	.54	.46	.40	.52	.45	.39	.50	.43	.38	.48	.42	.38	.36
7.0	.50	.41	.35	.49	.41	.35	.47	.40	.34	.46	.39	.34	.44	.38	.33	.31
8.0	.46	.37	.31	.45	.37	.31	.43	.36	.31	.42	.35	.30	.40	.34	.30	.28
9.0	.42	.34	.28	.41	.33	.28	.40	.33	.28	.38	.32	.27	.37	.31	.27	.25
10.0	.39	.31	.25	.38	.30	.25	.37	.30	.25	.36	.29	.25	.34	.29	.24	.23



C Range: 0 - 360DEG
 C Interval: 30.0DEG
 Test Speed: HIGH
 Temperature: 25.3DEG
 Operators: DAMIN
 Test Date: 2021-08-28

γ Range: 0 - 180DEG
 γ Interval: 1.0DEG
 Test System: EVERFINE GO-2000A_V1 SYSTEM V2.00.443
 Humidity: 65.0%
 Test Distance: 8.000m [K=0.7063]
 Remarks:

WEC AND CCEC

Test:U:24.000V I:0.3990A P:9.6000W PF:1.0000 Freq:0Hz		
Lamp Flux:139.824x1 lm		
NAME: HF0612SB.10.3K	TYPE: LED	
MFR.: HELIFLEX		

ρ_{cc}	80%			70%			50%			30%			10%			0
ρ_w	50%	30%	10%	50%	30%	10%	50%	30%	10%	50%	30%	10%	50%	30%	10%	0
ρ_{fc}	20%			20%			20%			20%			20%			0
RCR	RCR:Room Cavity Ratio						Wall Exitance Coefficients(WEC)									
0.0																
1.0	.316	.180	.057	.308	.175	.056	.292	.168	.054	.278	.160	.051	.265	.154	.049	
2.0	.295	.162	.050	.287	.158	.049	.274	.152	.047	.261	.146	.046	.249	.141	.044	
3.0	.272	.145	.043	.265	.142	.043	.253	.137	.042	.242	.132	.041	.231	.128	.040	
4.0	.250	.130	.038	.244	.128	.038	.234	.124	.037	.223	.120	.036	.214	.116	.035	
5.0	.231	.118	.034	.226	.116	.034	.216	.112	.033	.207	.109	.032	.198	.106	.032	
6.0	.214	.107	.031	.209	.106	.030	.201	.103	.030	.192	.100	.029	.185	.097	.029	
7.0	.199	.098	.028	.195	.097	.028	.187	.094	.027	.179	.092	.027	.173	.090	.026	
8.0	.186	.091	.026	.182	.090	.025	.175	.087	.025	.168	.085	.025	.162	.083	.024	
9.0	.174	.084	.023	.171	.083	.023	.164	.081	.023	.158	.079	.023	.152	.077	.022	
10.0	.163	.078	.022	.160	.077	.022	.154	.076	.021	.149	.074	.021	.144	.072	.021	

ρ_{cc}	80%			70%			50%			30%			10%			0
ρ_w	50%	30%	10%	50%	30%	10%	50%	30%	10%	50%	30%	10%	50%	30%	10%	0
ρ_{fc}	20%			20%			20%			20%			20%			0
RCR	RCR:Room Cavity Ratio						Ceiling Cavity Exitance Coefficients(CCEC)									
0.0																
1.0	.219	.219	.219	.187	.187	.187	.128	.128	.128	.073	.073	.073	.023	.023	.023	
2.0	.202	.161	.127	.173	.139	.110	.118	.096	.076	.068	.056	.045	.022	.018	.015	
3.0	.194	.144	.103	.166	.124	.090	.114	.086	.063	.066	.050	.037	.021	.016	.012	
4.0	.187	.130	.088	.160	.113	.076	.110	.079	.054	.064	.046	.032	.020	.015	.010	
5.0	.179	.120	.077	.154	.104	.067	.106	.073	.047	.061	.043	.028	.020	.014	.009	
6.0	.172	.112	.069	.148	.097	.060	.102	.068	.042	.059	.040	.025	.019	.013	.008	
7.0	.165	.105	.063	.142	.091	.055	.098	.064	.039	.057	.038	.023	.018	.012	.008	
8.0	.159	.099	.058	.137	.086	.051	.095	.060	.036	.055	.036	.022	.018	.012	.007	
9.0	.153	.094	.055	.131	.082	.048	.091	.058	.034	.053	.034	.020	.017	.011	.007	
10.0	.147	.090	.052	.127	.078	.046	.088	.055	.032	.051	.033	.019	.017	.011	.006	

C Range: 0 - 360DEG
C Interval: 30.0DEG
Test Speed: HIGH
Temperature:25.3DEG
Operators:DAMIN
Test Date:2021-08-28

γ Range: 0 - 180DEG
 γ Interval: 1.0DEG
Test System:EVERFINE GO-2000A_V1 SYSTEM V2.00.443
Humidity:65.0%
Test Distance:8.000m [K=0.7063]
Remarks:

UGR(Unified Glare Rating) Table

Test:U:24.000V I:0.3990A P:9.6000W PF:1.0000 Freq:0Hz		
Lamp Flux:139.824x1 lm		
NAME: HF0612SB.10.3K	TYPE: LED	
MFR.: HELIFLEX		

ceiling/cavity	0.7	0.7	0.5	0.5	0.3	0.7	0.7	0.5	0.5	0.3
walls	0.5	0.3	0.5	0.3	0.3	0.5	0.3	0.5	0.3	0.3
working plane	0.2	0.2	0.2	0.2	0.2	0.2	0.2	0.2	0.2	0.2
Room dimensions	Viewed crosswise					Viewed endwise				
x = 2H y = 2H	17.0	18.5	17.3	18.8	19.1	17.2	18.7	17.6	19.0	19.3
3H	18.5	19.9	18.8	20.2	20.5	18.8	20.1	19.1	20.4	20.8
4H	19.1	20.4	19.4	20.7	21.0	19.4	20.7	19.7	21.0	21.3
6H	19.5	20.7	19.8	21.0	21.4	19.8	21.0	20.2	21.3	21.7
8H	19.6	20.8	20.0	21.1	21.5	19.9	21.1	20.3	21.4	21.8
12H	19.6	20.8	20.1	21.1	21.5	19.9	21.1	20.3	21.4	21.8
4H 2H	17.6	18.9	18.0	19.2	19.6	17.8	19.1	18.2	19.4	19.7
3H	19.3	20.4	19.7	20.8	21.1	19.5	20.6	19.9	21.0	21.4
4H	20.0	21.0	20.4	21.4	21.8	20.2	21.2	20.6	21.6	22.0
6H	20.5	21.4	20.9	21.8	22.3	20.7	21.6	21.2	22.0	22.5
8H	20.6	21.5	21.1	21.9	22.4	20.9	21.7	21.3	22.2	22.6
12H	20.7	21.5	21.2	22.0	22.5	21.0	21.7	21.4	22.2	22.7
8H 4H	20.2	21.1	20.7	21.5	22.0	20.4	21.3	20.9	21.7	22.2
6H	20.8	21.6	21.4	22.0	22.5	21.1	21.8	21.6	22.2	22.7
8H	21.1	21.7	21.6	22.2	22.8	21.3	21.9	21.8	22.4	22.9
12H	21.3	21.8	21.8	22.3	22.9	21.4	22.0	22.0	22.5	23.1
12H 4H	20.2	21.0	20.7	21.4	21.9	20.4	21.2	20.9	21.6	22.1
6H	20.9	21.5	21.4	22.0	22.5	21.1	21.7	21.6	22.2	22.7
8H	21.2	21.7	21.7	22.2	22.8	21.4	21.9	21.9	22.4	23.0
Variations with the observer position at spacings(CIE Pub.117):										
S = 1.0H	+ 0.2 / - 0.2					+ 0.1 / - 0.2				
1.5H	+ 0.2 / - 0.3					+ 0.2 / - 0.3				
2.0H	+ 0.2 / - 0.3					+ 0.2 / - 0.3				

CIE Pub.117, 139.8 lm Total Lamp Luminous Flux Corrected (8log(F/F0) = -6.8)
 Area: 0.01 m2

C Range: 0 - 360DEG
C Interval: 30.0DEG
Test Speed: HIGH
Temperature:25.3DEG
Operators:DAMIN
Test Date:2021-08-28

γ Range: 0 - 180DEG
γ Interval: 1.0DEG
Test System:EVERFINE GO-2000A_V1 SYSTEM V2.00.443
Humidity:65.0%
Test Distance:8.000m [K=0.7063]
Remarks:

UTILIZATION FACTORS TABLE

Test:U:24.000V I:0.3990A P:9.6000W PF:1.0000 Freq:0Hz		
Lamp Flux:139.824x1 lm		
NAME: HF0612SB.10.3K	TYPE: LED	
MFR.: HELIFLEX		

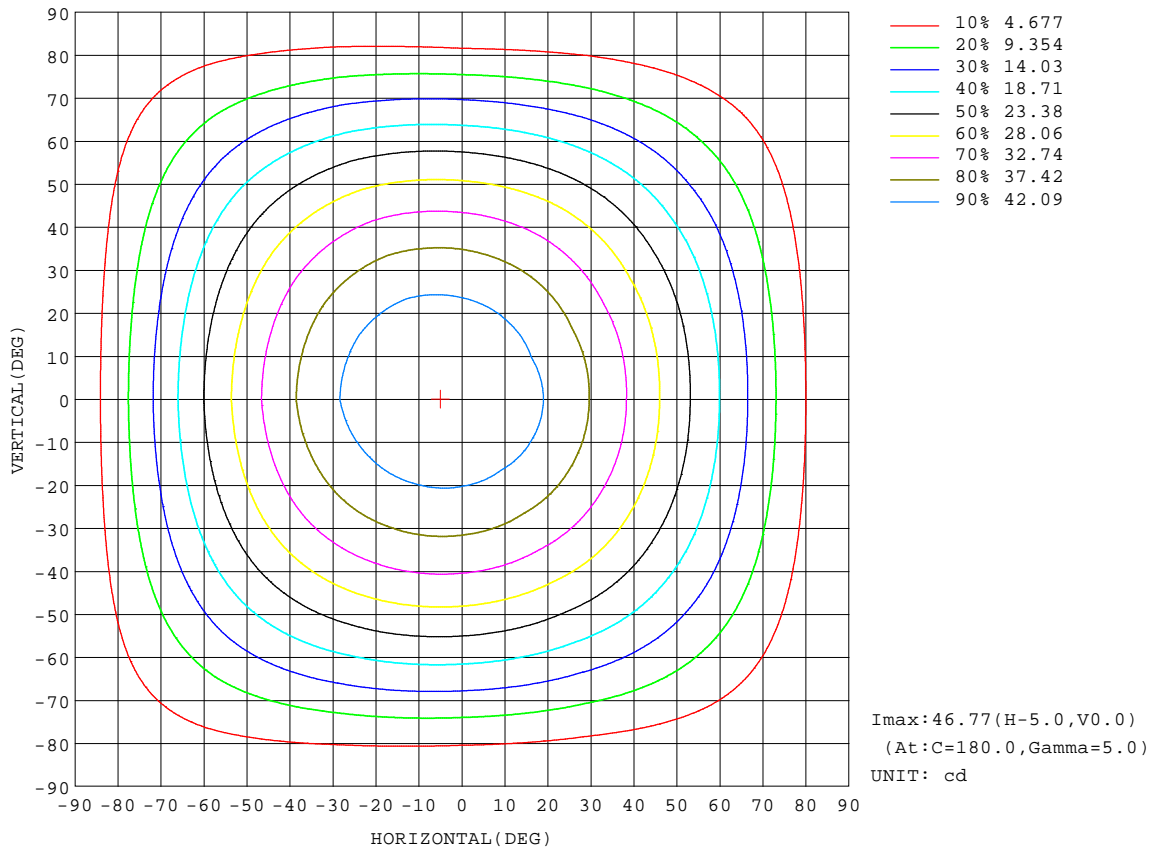
REFLECTANCE										
Ceiling	0.8	0.8	0.8	0.7	0.7	0.7	0.5	0.5	0.5	0
Walls	0.7	0.5	0.3	0.7	0.5	0.3	0.7	0.5	0.3	0
Working plane	0.2	0.2	0.2	0.2	0.2	0.2	0.2	0.2	0.2	0
ROOM INDEX	UTILIZATION FACTORS(PERCENT) $k(RI) \times RCR = 5$									
k = 0.60	56	44	37	55	44	37	54	43	37	30
0.80	66	54	47	65	54	46	63	53	46	39
1.00	74	63	55	73	62	55	70	63	54	47
1.25	81	71	63	80	70	63	77	68	62	54
1.50	86	76	69	84	75	68	81	73	67	59
2.00	93	84	78	91	83	77	87	80	75	66
2.50	97	89	83	95	88	82	91	84	80	70
3.00	101	94	88	98	92	86	94	88	84	74
4.00	105	99	94	102	97	92	97	93	89	79
5.00	107	102	98	104	100	96	99	96	93	82
ROOM INDEX	UF(total)									Direct
According to DIN EN 13032-2 2004			Suspended					SHRNOM = 1.25		

C Range: 0 - 360DEG
C Interval: 30.0DEG
Test Speed: HIGH
Temperature:25.3DEG
Operators:DAMIN
Test Date:2021-08-28

γ Range: 0 - 180DEG
 γ Interval: 1.0DEG
Test System:EVERFINE GO-2000A_V1 SYSTEM V2.00.443
Humidity:65.0%
Test Distance:8.000m [K=0.7063]
Remarks:

ISOCANDELA DIAGRAM

Test:U:24.000V I:0.3990A P:9.6000W PF:1.0000 Freq:0Hz		
Lamp Flux:139.824x1 lm		
NAME: HF0612SB.10.3K	TYPE: LED	
MFR.: HELIFLEX		



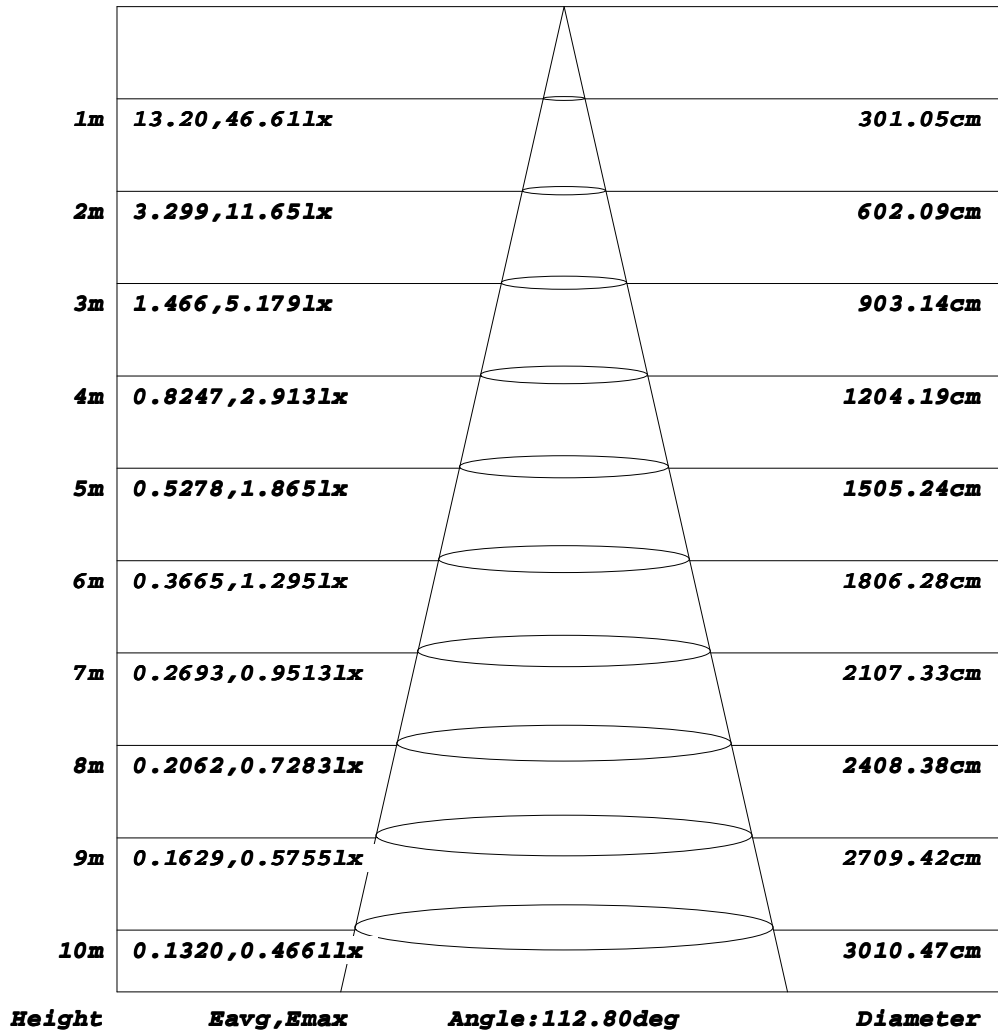
C Range: 0 - 360DEG
C Interval: 30.0DEG
Test Speed: HIGH
Temperature: 25.3DEG
Operators: DAMIN
Test Date: 2021-08-28

γ Range: 0 - 180DEG
γ Interval: 1.0DEG
Test System: EVERFINE GO-2000A_V1 SYSTEM V2.00.443
Humidity: 65.0%
Test Distance: 8.000m [K=0.7063]
Remarks:

AAI Figure

Test:U:24.000V I:0.3990A P:9.6000W PF:1.0000 Freq:0Hz		
Lamp Flux:139.824x1 lm		
NAME: HF0612SB.10.3K	TYPE: LED	
MFR.: HELIFLEX		

Flux out:98.30 lm



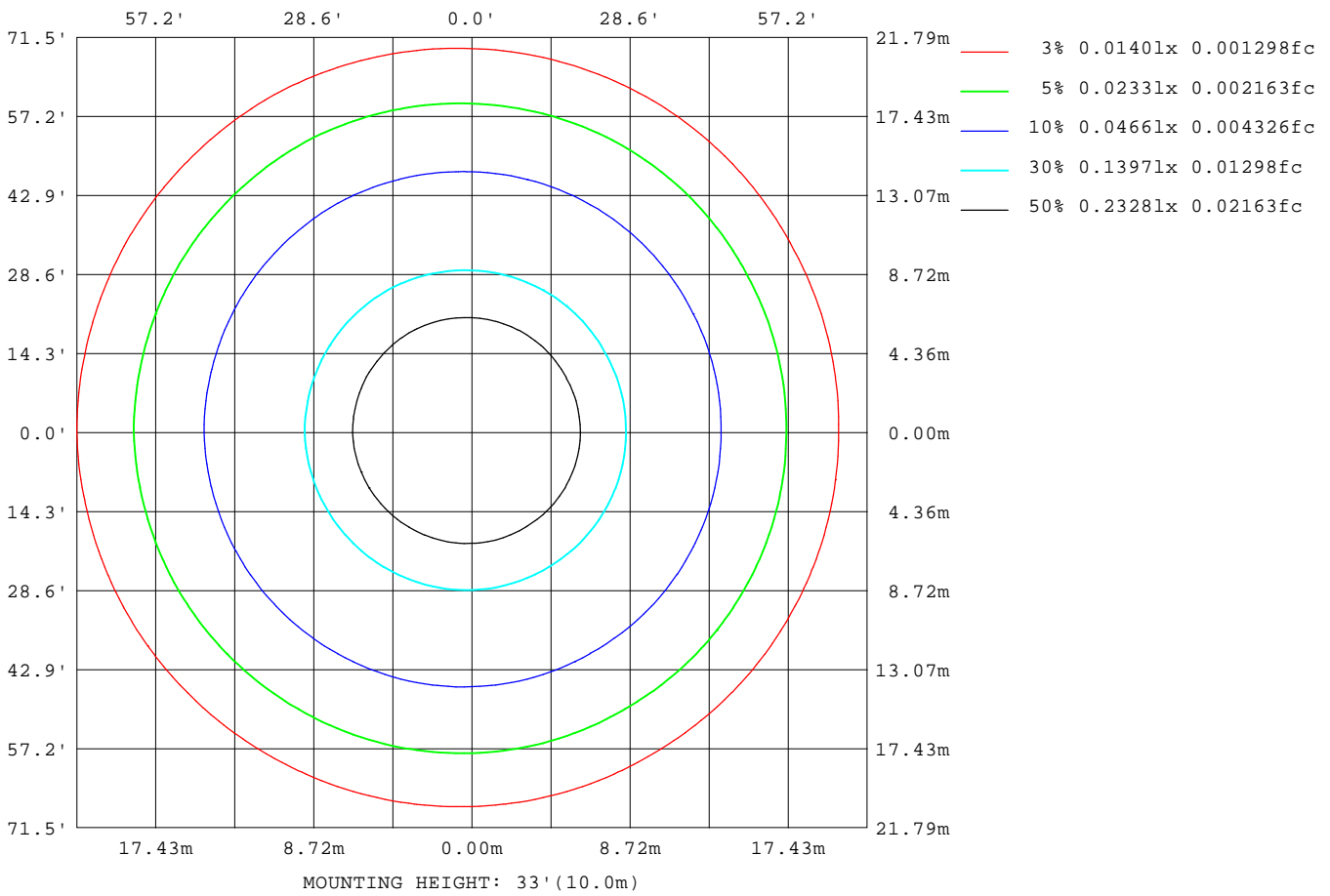
Note: The Curves indicate the illuminated area and the average illumination when the luminaire is at different distance.

C Range: 0 - 360DEG
C Interval: 30.0DEG
Test Speed: HIGH
Temperature: 25.3DEG
Operators: DAMIN
Test Date: 2021-08-28

γ Range: 0 - 180DEG
γ Interval: 1.0DEG
Test System: EVERFINE GO-2000A_V1 SYSTEM V2.00.443
Humidity: 65.0%
Test Distance: 8.000m [K=0.7063]
Remarks:

ISOLUX DIAGRAM

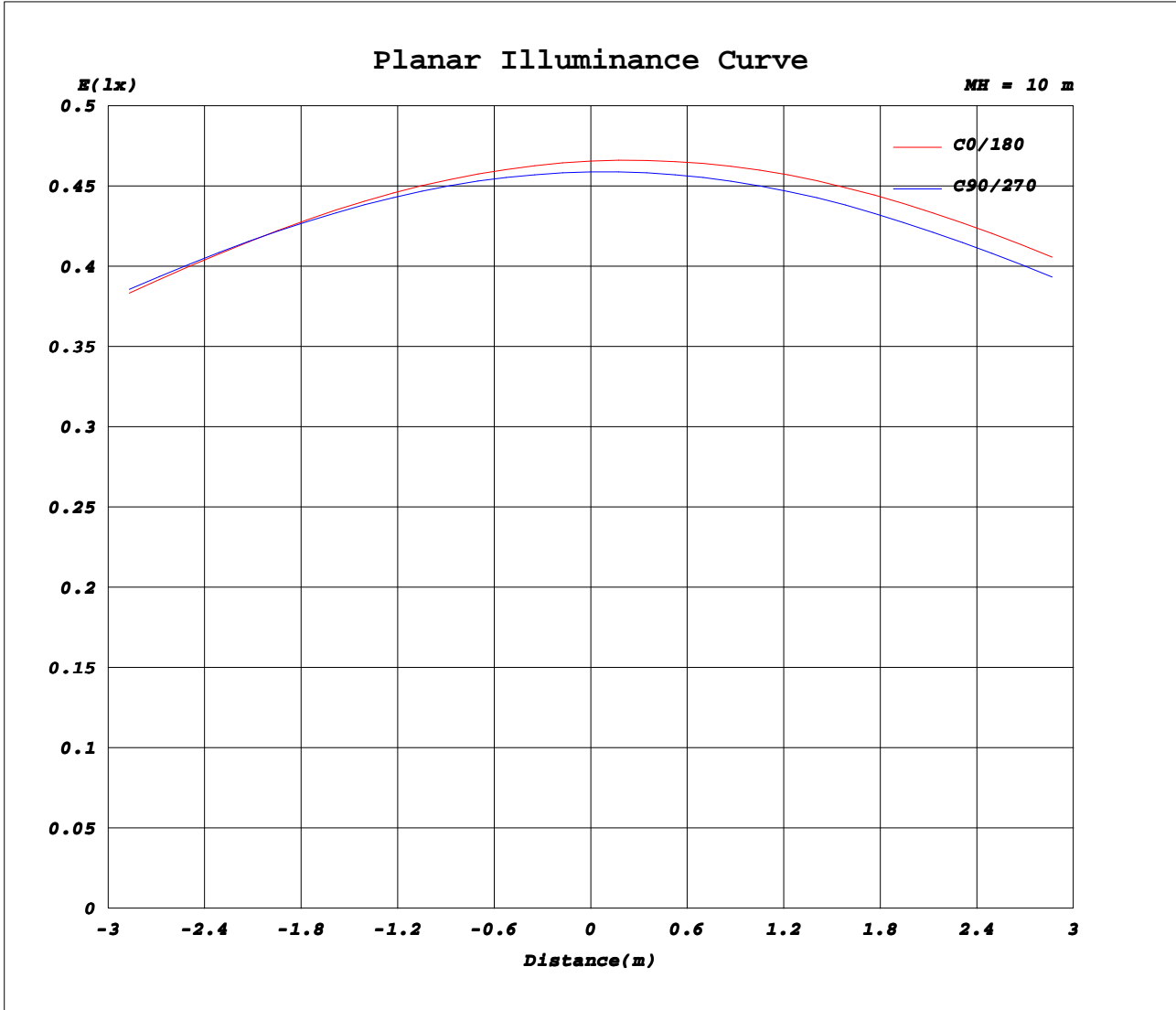
Test:U:24.000V I:0.3990A P:9.6000W PF:1.0000 Freq:0Hz		
Lamp Flux:139.824x1 lm		
NAME: HF0612SB.10.3K	TYPE: LED	
MFR.: HELIFLEX		



C Range: 0 - 360DEG
C Interval: 30.0DEG
Test Speed: HIGH
Temperature: 25.3DEG
Operators: DAMIN
Test Date: 2021-08-28

γ Range: 0 - 180DEG
γ Interval: 1.0DEG
Test System: EVERFINE GO-2000A_V1 SYSTEM V2.00.443
Humidity: 65.0%
Test Distance: 8.000m [K=0.7063]
Remarks:

Planar Illuminance Curve



C Range: 0 - 360DEG
C Interval: 30.0DEG
Test Speed: HIGH
Temperature: 25.3DEG
Operators: DAMIN
Test Date: 2021-08-28

γ Range: 0 - 180DEG
γ Interval: 1.0DEG
Test System: EVERFINE GO-2000A_V1 SYSTEM V2.00.443
Humidity: 65.0%
Test Distance: 8.000m [K=0.7063]
Remarks:

LUMINOUS DISTRIBUTION INTENSITY DATA

Test:U:24.000V I:0.3990A P:9.6000W PF:1.0000 Freq:0Hz		
Lamp Flux:139.824x1 lm		
NAME: HF0612SB.10.3K	TYPE: LED	
MFR.: HELIFLEX		

Table--1

UNIT: cd

C (DEG) \ γ (DEG)	0	30	60	90	120	150	180	210	240	270	300	330							
0	46.1	46.1	46.1	46.1	46.1	46.1	46.1	46.1	46.1	46.1	46.1	46.1							
5	45.5	45.5	45.6	45.8	45.9	46.1	46.3	46.3	46.2	46.0	45.8	45.6							
10	44.5	44.5	44.6	45.0	45.4	45.8	46.1	46.0	45.9	45.5	45.2	44.7							
15	43.0	43.1	43.4	43.9	44.5	45.1	45.4	45.4	45.3	44.7	44.1	43.5							
20	41.3	41.4	41.7	42.4	43.1	43.9	44.4	44.4	44.1	43.4	42.7	41.8							
25	39.2	39.3	39.7	40.5	41.4	42.3	42.9	42.9	42.6	41.8	40.9	39.8							
30	36.8	37.0	37.4	38.4	39.4	40.4	41.0	41.1	40.8	39.8	38.8	37.6							
35	34.2	34.4	34.9	35.9	37.0	38.2	38.8	38.9	38.5	37.5	36.3	35.1							
40	31.4	31.6	32.1	33.2	34.3	35.5	36.3	36.3	36.0	34.8	33.6	32.3							
45	28.4	28.5	29.0	30.2	31.3	32.6	33.4	33.4	33.1	31.9	30.7	29.3							
50	25.2	25.4	25.9	27.0	28.2	29.5	30.3	30.3	30.0	28.7	27.6	26.1							
55	21.9	22.0	22.5	23.5	24.7	26.0	26.8	26.8	26.5	25.3	24.1	22.7							
60	18.5	18.6	19.0	19.9	21.1	22.4	23.2	23.1	22.8	21.6	20.6	19.2							
65	14.9	15.0	15.4	16.2	17.3	18.6	19.3	19.3	18.9	17.8	16.8	15.7							
70	11.4	11.5	11.7	12.5	13.4	14.7	15.3	15.3	14.9	13.8	13.0	12.0							
75	7.89	7.97	8.05	8.64	9.50	10.7	11.3	11.2	10.8	9.77	9.15	8.36							
80	4.61	4.71	4.59	5.01	5.72	6.86	7.48	7.25	6.79	5.82	5.49	4.95							
85	2.09	2.07	1.87	1.97	2.68	3.60	4.09	3.87	3.37	2.47	2.43	2.18							
90	0.72	0.69	0.56	0.37	1.02	1.69	2.12	1.84	1.24	0.53	0.61	0.72							
95	0.45	0.47	0.46	0.38	0.81	1.15	1.40	1.22	0.84	0.43	0.51	0.51							
100	0.48	0.50	0.49	0.43	0.82	1.11	1.29	1.17	0.85	0.47	0.53	0.55							
105	0.52	0.54	0.52	0.48	0.85	1.14	1.31	1.18	0.87	0.51	0.55	0.58							
110	0.56	0.57	0.55	0.53	0.88	1.16	1.32	1.19	0.89	0.55	0.59	0.62							
115	0.61	0.62	0.60	0.58	0.84	1.17	1.33	1.21	0.87	0.60	0.63	0.66							
120	0.65	0.66	0.64	0.62	0.78	1.19	1.34	1.22	0.83	0.65	0.67	0.70							
125	0.70	0.70	0.68	0.67	0.76	1.17	1.34	1.21	0.81	0.69	0.72	0.74							
130	0.74	0.74	0.73	0.72	0.77	1.09	1.31	1.13	0.79	0.74	0.76	0.78							
135	0.79	0.78	0.76	0.77	0.80	1.02	1.21	1.05	0.81	0.78	0.80	0.82							
140	0.83	0.83	0.80	0.82	0.83	0.96	1.08	0.98	0.84	0.83	0.84	0.87							
145	0.87	0.87	0.86	0.86	0.87	0.92	1.00	0.94	0.87	0.87	0.88	0.90							
150	0.91	0.91	0.90	0.91	0.91	0.94	0.94	0.94	0.91	0.91	0.92	0.94							
155	0.95	0.95	0.95	0.97	0.97	0.96	0.96	0.96	0.95	0.95	0.96	0.97							
160	0.99	0.99	0.99	1.01	1.01	0.99	0.98	0.98	0.99	1.00	1.00	1.00							
165	1.03	1.03	1.04	1.05	1.05	1.03	1.02	1.01	1.03	1.04	1.04	1.04							
170	1.06	1.05	1.07	1.08	1.08	1.07	1.05	1.04	1.06	1.07	1.07	1.07							
175	1.07	1.07	1.09	1.10	1.10	1.09	1.07	1.06	1.09	1.09	1.10	1.09							
180	1.07	1.08	1.10	1.11	1.11	1.10	1.08	1.07	1.09	1.11	1.11	1.10							

C Range: 0 - 360DEG
C Interval: 30.0DEG
Test Speed: HIGH
Temperature: 25.3DEG
Operators: DAMIN
Test Date: 2021-08-28

γ Range: 0 - 180DEG
γ Interval: 1.0DEG
Test System: EVERFINE GO-2000A_V1 SYSTEM V2.00.443
Humidity: 65.0%
Test Distance: 8.000m [K=0.7063]
Remarks: